

p60 CAF1 Rabbit mAb

Catalog No: #49952



Package Size: #49952-1 50ul #49952-2 100ul

Orders: order@signalwayantibody.com
Support: tech@signalwayantibody.com

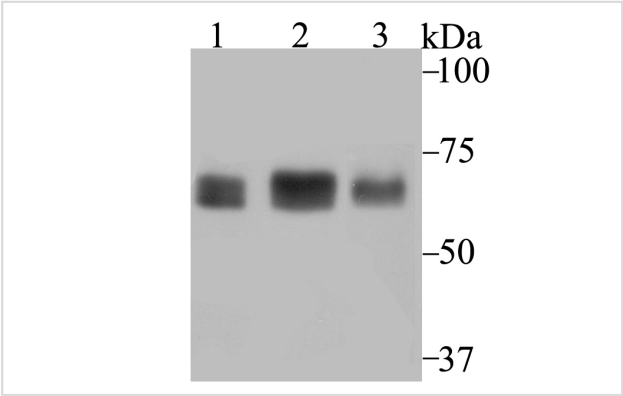
Description

Product Name	p60 CAF1 Rabbit mAb
Host Species	Recombinant Rabbit
Clonality	Monoclonal antibody
Clone No.	JG92-30
Purification	ProA affinity purified
Applications	WB,ICC,IF,IP,IHC,FC
Species Reactivity	Hu
Immunogen Description	Recombinant protein corresponding to the C-terminus of Human p60 CAF1.
Other Names	CAF 1 subunit B antibody CAF 1A antibody CAF I 60 kDa subunit antibody CAF IP60 antibody CAF-1 antibody CAF-1 subunit B antibody CAF-I 60 kDa subunit antibody CAF-I p60 antibody CAF1 antibody CAF1A antibody CAF1B_HUMAN antibody CAF1P60 antibody CHAF 1B antibody CHAF1B antibody Chromatin assembly factor 1 subunit B antibody Chromatin assembly factor I antibody Chromatin assembly factor I p60 subunit antibody Human chromatin assembly factor-I p60 subunit antibody M phase phosphoprotein 7 antibody M-phase phosphoprotein 7 antibody MPHOSPH7 antibody MPP 7 antibody MPP7 antibody p60 subunit antibody
Accession No.	Swiss-Prot#:Q13112
Uniprot	Q13112
GeneID	8208;
Calculated MW	61 kDa
Formulation	1*TBS (pH7.4), 1%BSA, 40%Glycerol. Preservative: 0.05% Sodium Azide.
Storage	Store at -20°C

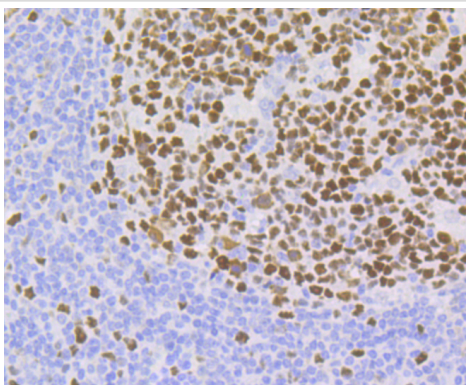
Application Details

WB: 1:500-1:2,000 IHC: 1:50-1:200 ICC/IF: 1:50-1:200IP: 1:10-1:50FC: 1:50-1:100

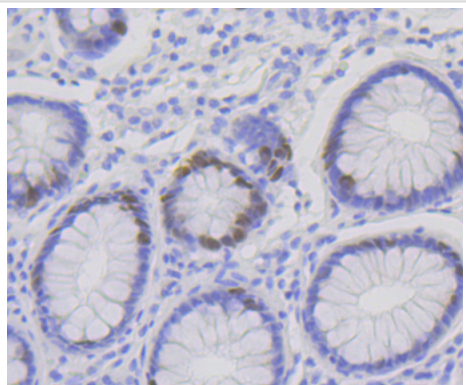
Images



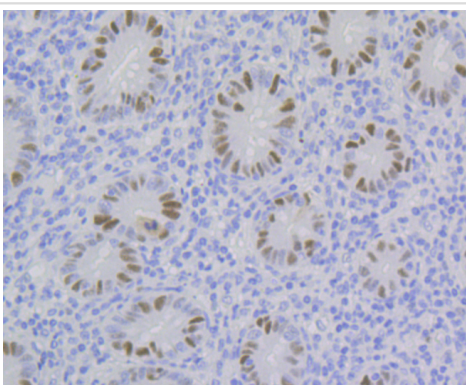
Western blot analysis of p60 CAF1 on different cell lysates using anti-p60 CAF1 antibody at 1/1,000 dilution. Positive control: Lane 1: SiHa Lane 2: K562 Lane 3: A431



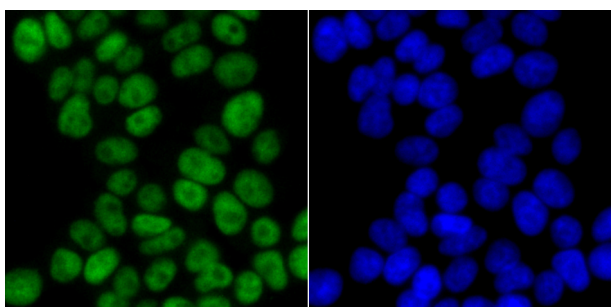
Immunohistochemical analysis of paraffin-embedded human tonsil tissue using anti-p60 CAF1 antibody. Counter stained with hematoxylin.



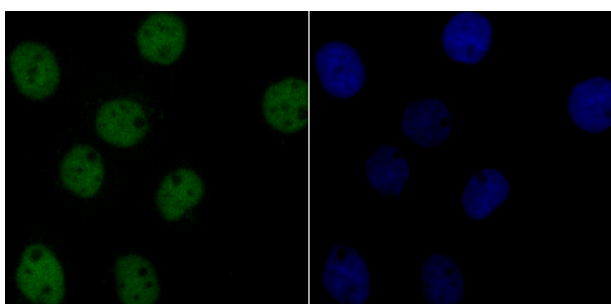
Immunohistochemical analysis of paraffin-embedded human colon tissue using anti-p60 CAF1 antibody. Counter stained with hematoxylin.



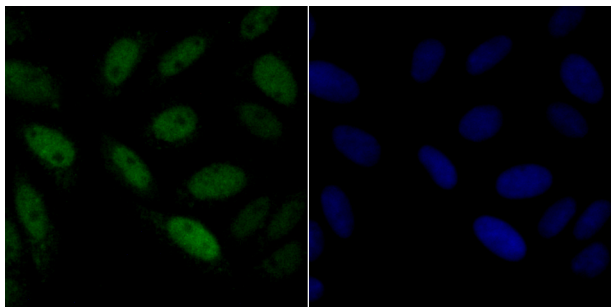
Immunohistochemical analysis of paraffin-embedded human appendix tissue using anti-p60 CAF1 antibody. Counter stained with hematoxylin.



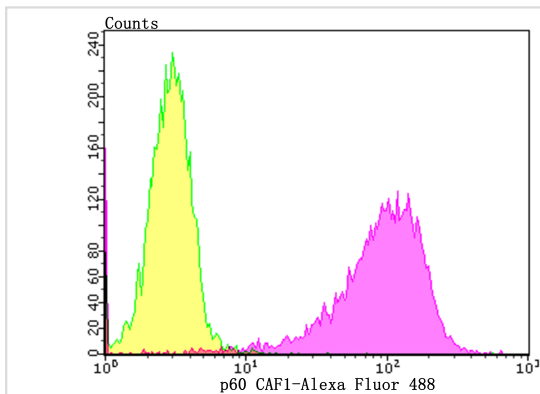
ICC staining p60 CAF1 in 293T cells (green). The nuclear counter stain is DAPI (blue). Cells were fixed in paraformaldehyde, permeabilised with 0.25% Triton X100/PBS.



ICC staining p60 CAF1 in A431 cells (green). The nuclear counter stain is DAPI (blue). Cells were fixed in paraformaldehyde, permeabilised with 0.25% Triton X100/PBS.



ICC staining p60 CAF1 in SiHa cells (green). The nuclear counter stain is DAPI (blue). Cells were fixed in paraformaldehyde, permeabilised with 0.25% Triton X100/PBS.



Flow cytometric analysis of K562 cells with p60 CAF1 antibody at 1/100 dilution (purple) compared with an unlabelled control (cells without incubation with primary antibody; yellow). Alexa Fluor 488-conjugated goat anti-rabbit IgG was used as the secondary antibody.

Background

Chromatin assembly factor-1 (CAF-1) is a multisubunit protein complex that comprises three polypeptide subunits known as p150, p60, and p48. CAF-1 is a nucleosome assembly factor that deposits newly synthesized and acetylated histones H3/H4 into nascent chromatin during DNA replication. The p150 subunit of CAF-1 also supports the maintenance of heterochromatin, which requires the synthesis of both new histones and heterochromatin proteins and their orderly assembly during DNA replication. Heterochromatin is characterized as densely coiled chromatin that generally replicates late during S phase, has a low gene density, and contains large blocks of repetitive DNA that is relatively inaccessible to DNA-modifying reagents. In late S phase, p150 directly associates with heterochromatin associated proteins 1 (HP1 α , HP1 β and HP1 γ). As cells prepare for mitosis, CAF-1 p150 and some HP1 progressively dissociate from heterochromatin, coinciding with the phosphorylation of histone H3. The HP1 proteins reassociate with chromatin at the end of mitosis, as histone H3 is dephosphorylated.

References

Note: This product is for in vitro research use only