

COMT Rabbit mAb

Catalog No: #49955



Package Size: #49955-1 50ul #49955-2 100ul

Orders: order@signalwayantibody.com
Support: tech@signalwayantibody.com

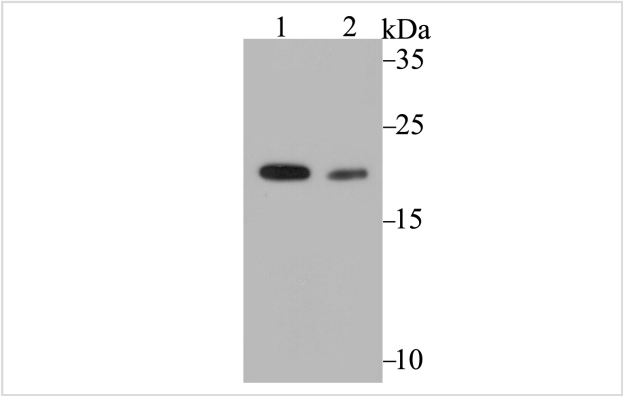
Description

Product Name	COMT Rabbit mAb
Host Species	Recombinant Rabbit
Clonality	Monoclonal antibody
Clone No.	JG39-48
Purification	ProA affinity purified
Applications	WB,IHC
Species Reactivity	Hu, Ms, Rt
Immunogen Description	Recombinant protein of C-terminal human COMT.
Other Names	Catechol O methyltransferase antibody Catechol O-methyltransferase antibody COMT antibody COMT_HUMAN antibody EC 2.1.1.6 antibody
Accession No.	Swiss-Prot#:P21964
Uniprot	P21964
GeneID	1312;
Calculated MW	24 kDa
Formulation	1*TBS (pH7.4), 1%BSA, 40%Glycerol. Preservative: 0.05% Sodium Azide.
Storage	Store at -20°C

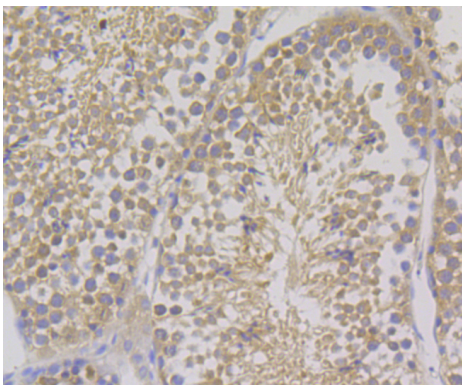
Application Details

WB: 1:500-1:2,000IHC: 1:50-1:100

Images



Western blot analysis of COMT on MCF-7 cell (1) and rat testis tissue (2) lysate using anti-COMT antibody at 1/2,000 dilution.



Immunohistochemical analysis of paraffin-embedded mouse testis tissue using anti-COMT antibody. Counter stained with hematoxylin.

Background

Catechol-O-methyltransferase (COMT) plays a crucial role in the regulation of central dopaminergic systems by catalyzing the inactivation of catechol-amines. It is widely distributed in most tissues in soluble and membrane-bound forms. COMT-mediated methylation metabolism of catecholamine neurotransmitters is a first-line detoxification pathway. A Val158Met polymorphism of the COMT gene affects activity of the enzyme and influences performance and efficiency of the prefrontal cortex of the brain. Sequential conversion of estradiol to methoxyestradiol by COMT, contributes to the antimitogenic effects of estradiol on vascular smooth muscle cell growth via estrogen receptor-independent mechanisms.

References

Note: This product is for in vitro research use only