

Lumican Rabbit mAb

Catalog No: #49986



Package Size: #49986-1 50ul #49986-2 100ul

Orders: order@signalwayantibody.com
Support: tech@signalwayantibody.com

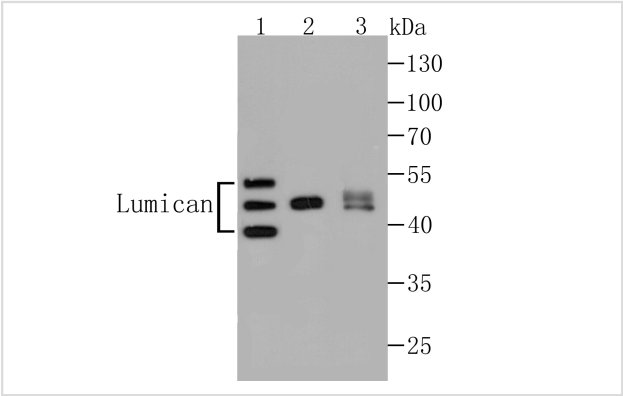
Description

Product Name	Lumican Rabbit mAb			
Host Species	Recombinant Rabbit			
Clonality	Monoclonal antibody			
Clone No.	JE11-45			
Purification	ProA affinity purified			
Applications	WB,ICC,IHC,FC			
Species Reactivity	Hu, Ms, Rt			
Immunogen Description	Recombinant protein within human Lumican aa 50-250.			
Other Names	Keratan sulfate proteoglycan lumican antibody KSPG lumican antibody LDC antibody LUM antibody LUM_HUMAN antibody Lumican antibody Lumican precursor antibody SLRR2D antibody			
Accession No.	Swiss-Prot#:P51884			
Uniprot	P51884			
GeneID	4060;			
Calculated MW	38 kDa			
Formulation	1*TBS (pH7.4), 1%BSA, 40%Glycerol. Preservative: 0.05% Sodium Azide.			
Storage	Store at -20°C			

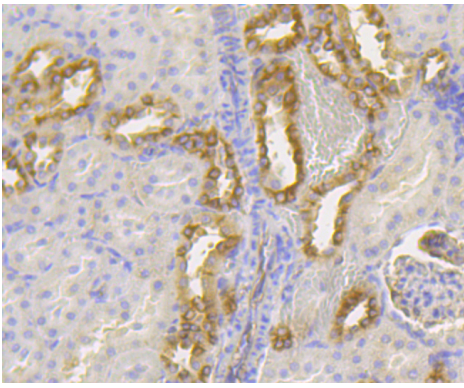
Application Details

WB: 1:500-1:2,000 IHC: 1:50-1:200 ICC: 1:50-1:200FC: 1:50-1:100

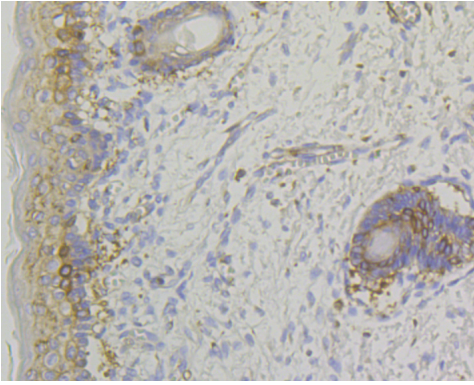
Images



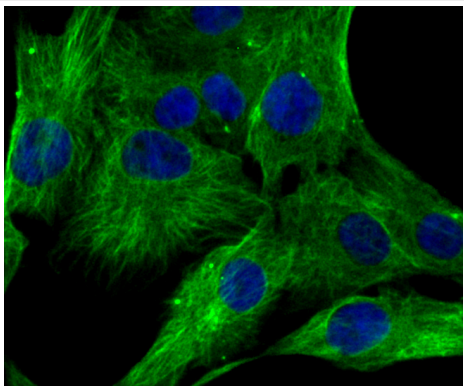
Western blot analysis of Lumican on different lysates using anti-Lumican antibody at 1/1,000 dilution. Positive control:
Lane 1: Jurkat Lane 2: 293T Lane 3: Human skin



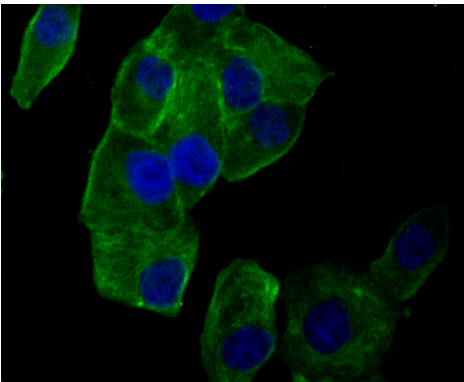
Immunohistochemical analysis of paraffin-embedded rat kidney tissue using anti-Lumican antibody. Counter stained with hematoxylin.



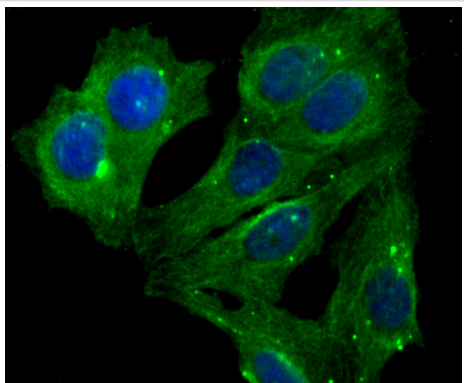
Immunohistochemical analysis of paraffin-embedded human skin tissue using anti-Lumican antibody. Counter stained with hematoxylin.



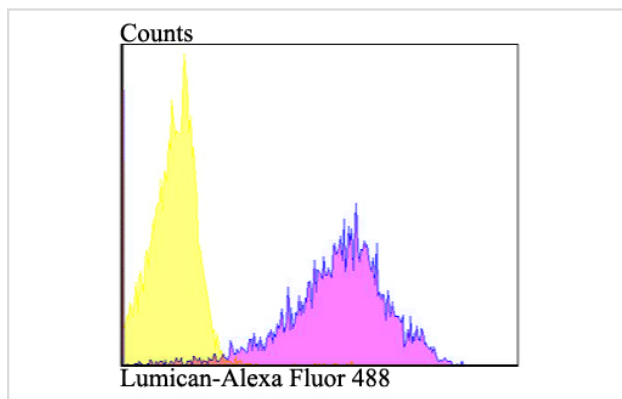
ICC staining Lumican in MG-63 cells (green). The nuclear counter stain is DAPI (blue). Cells were fixed in paraformaldehyde, permeabilised with 0.25% Triton X100/PBS.



ICC staining Lumican in PANC-1 cells (green). The nuclear counter stain is DAPI (blue). Cells were fixed in paraformaldehyde, permeabilised with 0.25% Triton X100/PBS.



ICC staining Lumican in MCF-7 cells (green). The nuclear counter stain is DAPI (blue). Cells were fixed in paraformaldehyde, permeabilised with 0.25% Triton X100/PBS.



Flow cytometric analysis of 293T cells with Lumican antibody at 1/100 dilution (purple) compared with an unlabelled control (cells without incubation with primary antibody; yellow). Alexa Fluor 488-conjugated goat anti-rabbit IgG was used as the secondary antibody.

Background

Lumican, a member of the small leucine-rich proteoglycans (SLRPs) family of proteins, is a keratan sulfate proteoglycan present in large quantities in the corneal stroma and in interstitial collagenous matrices of the heart, aorta, skeletal muscle, skin, and intervertebral discs. During collagen fibrillogenesis, lumican regulates the assembly of collagens into higher order fibrils, limiting the growth of fibrils in diameter. Lumican is present in the extracellular matrix of human articular cartilage at all ages, with a far greater abundance in the adult. The gene encoding human lumican maps to chromosome 12q21.3-q22.

References

Note: This product is for in vitro research use only