

Cathepsin S antibody

Catalog No: #22690

Orders: order@signalwayantibody.comSupport: tech@signalwayantibody.com

Description

Product Name	Cathepsin S antibody
Host Species	Rabbit
Clonality	Polyclonal
Purification	Purified by antigen-affinity chromatography.
Applications	WB IHC
Species Reactivity	Hu
Immunogen Type	Recombinant protein
Immunogen Description	Recombinant protein fragment contain a sequence corresponding to a region within amino acids 32 and 275 of Cathepsin S
Target Name	Cathepsin S
Other Names	MGC3886
Accession No.	Swiss-Prot:P25774Gene ID:1520
Uniprot	P25774
GeneID	1520;
Concentration	0.7mg/ml
Formulation	Supplied in 0.1M Tris-buffered saline with 10% Glycerol (pH7.0). 0.01% Thimerosal was added as a preservative.
Storage	Store at -20°C for long term preservation (recommended). Store at 4°C for short term use.

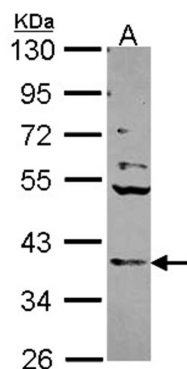
Application Details

Predicted MW: 38kd

Western blotting: 1:500-1:3000

Immunohistochemistry: 1:100-1:250

Images

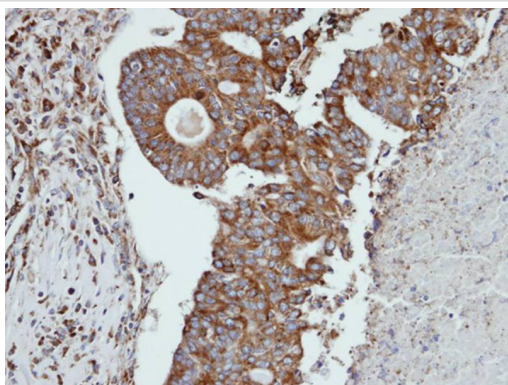


Sample (30 ug of whole cell lysate)

A: A431

10% SDS PAGE

Cathepsin S antibody diluted at 1: 1000



Immunohistochemical analysis of paraffin-embedded endometrial OVCA, using CTSS antibody at 1: 100 dilution.

Background

The protein encoded by this gene, a member of the peptidase C1 family, is a lysosomal cysteine proteinase that may participate in the degradation of antigenic proteins to peptides for presentation on MHC class II molecules. The encoded protein can function as an elastase over a broad pH range in alveolar macrophages. Transcript variants utilizing alternative polyadenylation signals exist for this gene. [provided by RefSeq]

Note: This product is for in vitro research use only