

CD161 Polyclonal Antibody

Catalog No: #41682

Package Size: #41682-1 50ul #41682-2 100ul

Orders: order@signalwayantibody.comSupport: tech@signalwayantibody.com

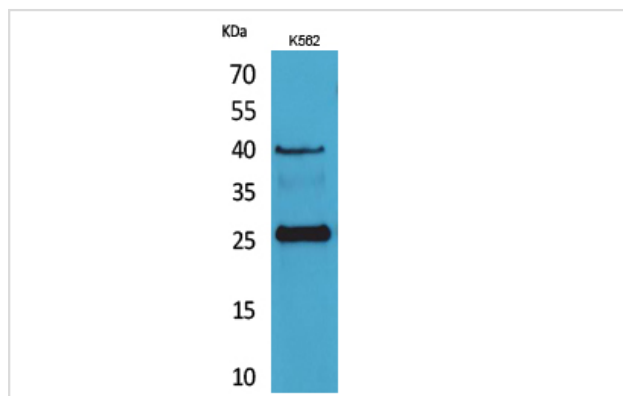
Description

Product Name	CD161 Polyclonal Antibody
Host Species	Rabbit
Clonality	Polyclonal
Purification	The antibody was affinity-purified from rabbit antiserum by affinity-chromatography using epitope-specific immunogen.
Applications	WB
Species Reactivity	Human,Mouse,Rat
Specificity	CD161 Polyclonal Antibody detects endogenous levels of CD161 protein.
Immunogen Description	Synthesized peptide derived from the Internal region of human CD161.
Target Name	CD161
Other Names	KLRB1; CLEC5B; NKRP1A; Killer cell lectin-like receptor subfamily B member 1; C-type lectin domain family 5 member B; HNKRP-1a; NKRP-1A; Natural killer cell surface protein P1A; CD161
Accession No.	Swiss-Prot: Q12918NCBI Gene ID: 3820
Uniprot	Q12918
GeneID	3820;
SDS-PAGE MW	25kd
Concentration	1mg/ml
Formulation	Liquid in PBS containing 50% glycerol, 0.5% BSA and 0.02% sodium azide.
Storage	Store at -20°C/1 year

Application Details

Western Blot: 1/500 - 1/2000.

Images



Western Blot analysis of K562 cells using CD161 Polyclonal Antibody

Note: This product is for in vitro research use only