

Copine-3 antibody

Catalog No: #22698

Orders: order@signalwayantibody.comSupport: tech@signalwayantibody.com

Description

Product Name	Copine-3 antibody
Host Species	Rabbit
Clonality	Polyclonal
Purification	Purified by antigen-affinity chromatography.
Applications	WB IHC
Species Reactivity	Hu
Immunogen Type	Recombinant protein
Immunogen Description	Recombinant protein fragment contain a sequence corresponding to a region within amino acids 234 and 533 of Human CPNE3
Target Name	Copine-3
Other Names	CPN3
Accession No.	Swiss-Prot:O75131Gene ID:8895
Uniprot	O75131
GeneID	8895;
Concentration	0.5mg/ml
Formulation	Supplied in 0.1M Tris-buffered saline with 10% Glycerol (pH7.0). 0.01% Thimerosal was added as a preservative.
Storage	Store at -20°C for long term preservation (recommended). Store at 4°C for short term use.

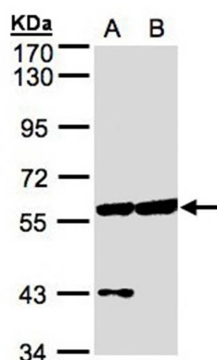
Application Details

Predicted MW: 60kd

Western blotting: 1:500-1:3000

Immunohistochemistry: 1:100-1:250

Images



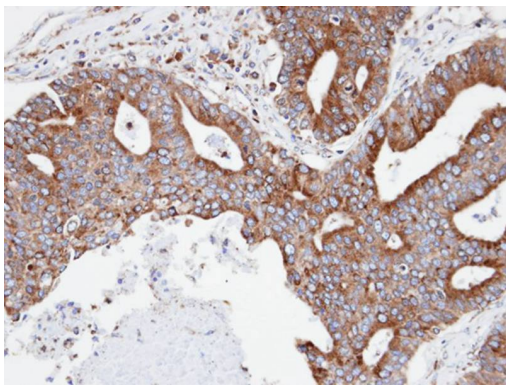
Sample(30 ug of whole cell lysate)

A: HeLa S3

B: Hep G2

7.5% SDS PAGE

Primary antibody diluted at 1: 500



Immunohistochemical analysis of paraffin-embedded endometrial OVCA, using CPNE3 antibody at 1: 100 dilution.

Background

Calcium-dependent membrane-binding proteins may regulate molecular events at the interface of the cell membrane and cytoplasm. This gene encodes a protein which contains two type II C2 domains in the amino-terminus and an A domain-like sequence in the carboxy-terminus. The A domain mediates interactions between integrins and extracellular ligands. [provided by RefSeq]

Note: This product is for in vitro research use only