

## Nov Polyclonal Antibody

Catalog No: #41797

Package Size: #41797-1 50ul #41797-2 100ul

Orders: [order@signalwayantibody.com](mailto:order@signalwayantibody.com)Support: [tech@signalwayantibody.com](mailto:tech@signalwayantibody.com)

## Description

Product Name	Nov Polyclonal Antibody
Host Species	Rabbit
Clonality	Polyclonal
Purification	The antibody was affinity-purified from rabbit antiserum by affinity-chromatography using epitope-specific immunogen.
Applications	WB ELISA
Species Reactivity	Hu Ms
Specificity	Nov Polyclonal Antibody detects endogenous levels of Nov protein.
Immunogen Type	peptide
Immunogen Description	Synthesized peptide derived from the Internal region of human Nov.
Target Name	Nov
Other Names	NOV; CCN3; IGFBP9; NOVH; Protein NOV homolog; NovH; CCN family member 3; Insulin-like growth factor-binding protein 9; IBP-9; IGF-binding protein 9; IGFBP-9; Nephroblastoma-overexpressed gene protein homolog
Accession No.	Swiss-Prot: P48745NCBI Gene ID: 4856
Uniprot	P48745
GeneID	4856;
SDS-PAGE MW	39kd
Concentration	1mg/ml
Formulation	Liquid in PBS containing 50% glycerol, 0.5% BSA and 0.02% sodium azide.
Storage	Store at -20°C/1 year

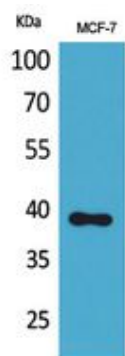
## Application Details

Western Blot: 1/500 - 1/2000.

ELISA: 1/20000.

Not yet tested in other applications.

## Images



Western Blot analysis of MCF-7 cells using Nov Polyclonal Antibody.

Note: This product is for in vitro research use only