

BMPR2 antibody

Catalog No: #22704

Orders: order@signalwayantibody.com

Support: tech@signalwayantibody.com

Description

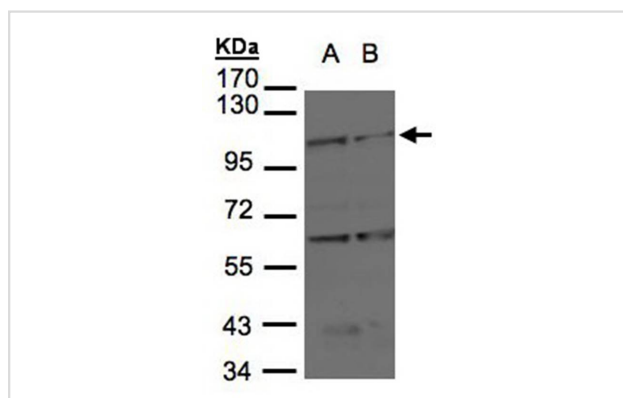
Product Name	BMPR2 antibody
Host Species	Rabbit
Clonality	Polyclonal
Purification	Purified by antigen-affinity chromatography.
Applications	WB
Species Reactivity	Hu
Immunogen Type	Recombinant protein
Immunogen Description	Recombinant protein fragment contain a sequence corresponding to a region within amino acids 667 and 921 of Human BMPR2
Target Name	BMPR2
Other Names	BMPR-II; BMPR3; BMR2; BRK-3; FLJ41585; FLJ76945; PPH1; T-ALK
Accession No.	Swiss-Prot:Q13873Gene ID:659
Uniprot	Q13873
GeneID	659;
Concentration	0.9mg/ml
Formulation	Supplied in 0.1M Tris-buffered saline with 10% Glycerol (pH7.0). 0.01% Thimerosal was added as a preservative.
Storage	Store at -20°C for long term preservation (recommended). Store at 4°C for short term use.

Application Details

Predicted MW: 115kd

Western blotting: 1:500-1:3000

Images



Sample(30 ug of whole cell lysate)
A: H1299
B: Raji
7.5% SDS PAGE
Primary antibody diluted at 1: 1000

Background

This gene encodes a member of the bone morphogenetic protein (BMP) receptor family of transmembrane serine/threonine kinases. The ligands of

this receptor are BMPs, which are members of the TGF-beta superfamily. BMPs are involved in endochondral bone formation and embryogenesis. These proteins transduce their signals through the formation of heteromeric complexes of two different types of serine (threonine) kinase receptors: type I receptors of about 50-55 kD and type II receptors of about 70-80 kD. Type II receptors bind ligands in the absence of type I receptors, but they require their respective type I receptors for signaling, whereas type I receptors require their respective type II receptors for ligand binding. Mutations in this gene have been associated with primary pulmonary hypertension, both familial and fenfluramine-associated, and with pulmonary venoocclusive disease. [provided by RefSeq]

Note: This product is for in vitro research use only