

# Rab 5A Polyclonal Antibody

Catalog No: #41829

Package Size: #41829-1 50ul #41829-2 100ul

Orders: [order@signalwayantibody.com](mailto:order@signalwayantibody.com)Support: [tech@signalwayantibody.com](mailto:tech@signalwayantibody.com)

## Description

Product Name	Rab 5A Polyclonal Antibody
Host Species	Rabbit
Clonality	Polyclonal
Purification	The antibody was affinity-purified from rabbit antiserum by affinity-chromatography using epitope-specific immunogen.
Applications	WB ELISA
Species Reactivity	Hu Ms Rt
Specificity	Rab 5A Polyclonal Antibody detects endogenous levels of Rab 5A protein.
Immunogen Type	peptide
Immunogen Description	Synthesized peptide derived from the Internal region of human Rab 5A.
Target Name	Rab 5A
Other Names	RAB5A; RAB5; Ras-related protein Rab-5A
Accession No.	Swiss-Prot: P20339NCBI Gene ID: 5868
Uniprot	P20339
GeneID	5868;
SDS-PAGE MW	24kd
Concentration	1mg/ml
Formulation	Liquid in PBS containing 50% glycerol, 0.5% BSA and 0.02% sodium azide.
Storage	Store at -20°C/1 year

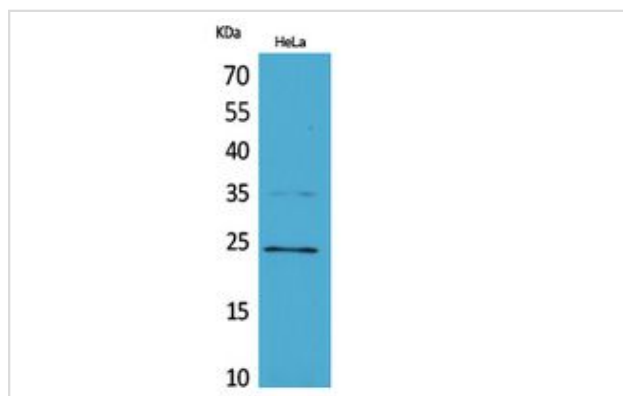
## Application Details

Western Blot: 1/500 - 1/2000.

ELISA: 1/20000.

Not yet tested in other applications.

## Images



Western Blot analysis of HeLa cells using Rab 5A Polyclonal Antibody.

---

Note: This product is for in vitro research use only