

## DcR1 Polyclonal Antibody

Catalog No: #41854

Package Size: #41854-1 50ul #41854-2 100ul

Orders: [order@signalwayantibody.com](mailto:order@signalwayantibody.com)Support: [tech@signalwayantibody.com](mailto:tech@signalwayantibody.com)

## Description

Product Name	DcR1 Polyclonal Antibody
Host Species	Rabbit
Clonality	Polyclonal
Purification	The antibody was affinity-purified from rabbit antiserum by affinity-chromatography using epitope-specific immunogen.
Applications	WB ELISA
Species Reactivity	Hu
Specificity	DcR1 Polyclonal Antibody detects endogenous levels of DcR1 protein.
Immunogen Type	peptide
Immunogen Description	Synthesized peptide derived from the Internal region of human DcR1.
Target Name	DcR1
Other Names	TNFRSF10C; DCR1; LIT; TRAILR3; TRID; Tumor necrosis factor receptor superfamily member 10C; Antagonist decoy receptor for TRAIL/Apo-2L; Decoy TRAIL receptor without death domain
Accession No.	Swiss-Prot: O14798NCBI Gene ID: 8794
Uniprot	O14798
GeneID	8794;
SDS-PAGE MW	27kd
Concentration	1mg/ml
Formulation	Liquid in PBS containing 50% glycerol, 0.5% BSA and 0.02% sodium azide.
Storage	Store at -20°C/1 year

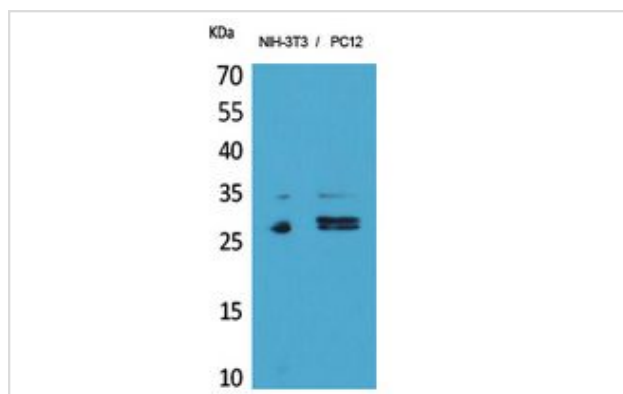
## Application Details

Western Blot: 1/500 - 1/2000.

ELISA: 1/20000.

Not yet tested in other applications.

## Images



Western Blot analysis of NIH-3T3, PC12 cells using DcR1 Polyclonal Antibody.

---

Note: This product is for in vitro research use only