

Protease Inhibitor 15 antibody

Catalog No: #22711



Orders: order@signalwayantibody.com
Support: tech@signalwayantibody.com

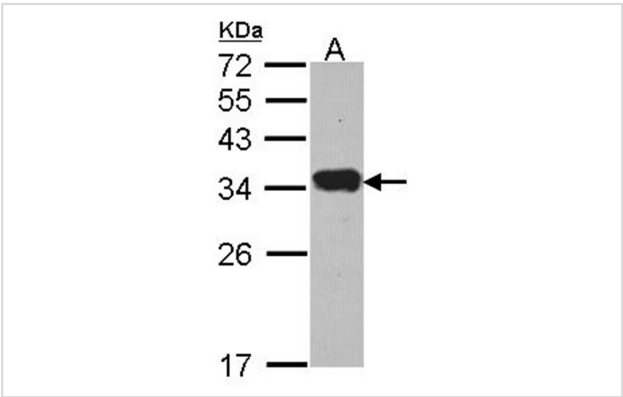
Description

| | |
|-----------------------|--|
| Product Name | Protease Inhibitor 15 antibody |
| Host Species | Rabbit |
| Clonality | Polyclonal |
| Purification | Purified by antigen-affinity chromatography. |
| Applications | WB IHC IF |
| Species Reactivity | Hu |
| Immunogen Type | Peptide |
| Immunogen Description | Synthetic peptide contain a sequence corresponding to a region within amino acids 195 and 258 of Protease Inhibitor 15 |
| Target Name | Protease Inhibitor 15 |
| Accession No. | Swiss-Prot:O43692Gene ID:51050 |
| Uniprot | O43692 |
| GeneID | 51050; |
| Concentration | 0.6mg/ml |
| Formulation | Supplied in 0.1M Tris-buffered saline with 20% Glycerol (pH7.0). 0.01% Thimerosal was added as a preservative. |
| Storage | Store at -20°C for long term preservation (recommended). Store at 4°C for short term use. |

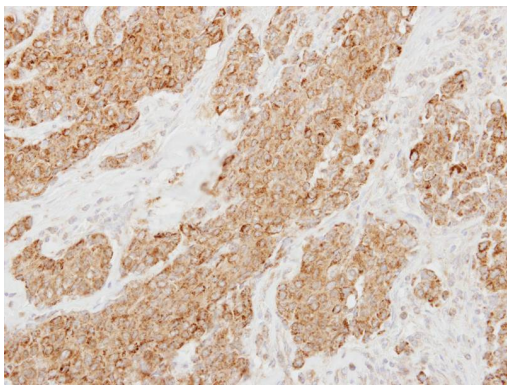
Application Details

Predicted MW: 29kd
Western blotting: 1:500-1:3000
Immunohistochemistry: 1:100-1:250
Immunofluorescence: 1:100-1:200

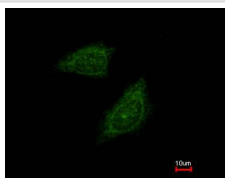
Images



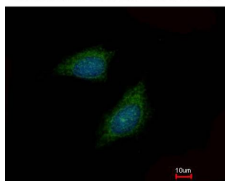
Sample (30 ug of whole cell lysate)
A: HeLa
12% SDS PAGE
Protease Inhibitor 15 antibody diluted at 1: 1000



Immunohistochemical analysis of paraffin-embedded Breast ca, using Protease Inhibitor 15 antibody at 1: 250 dilution.



Costained with Hoechst 33342



Immunofluorescence analysis of methanol-fixed HeLa, using Protease Inhibitor 15 antibody at 1: 500 dilution.

Background

This gene encodes a trypsin inhibitor. The protein shares similarity to insect venom allergens, mammalian testis-specific proteins and plant pathogenesis-related proteins. It is frequently expressed in human neuroblastoma and glioblastoma cell lines, and thus may play a role in the central nervous system. [provided by RefSeq]

Note: This product is for in vitro research use only