

HSPB8 antibody

Catalog No: #22713

Orders: order@signalwayantibody.comSupport: tech@signalwayantibody.com

Description

Product Name	HSPB8 antibody
Host Species	Rabbit
Clonality	Polyclonal
Purification	Purified by antigen-affinity chromatography.
Applications	WB IHC IF
Species Reactivity	Hu
Immunogen Type	Peptide
Immunogen Description	Synthetic peptide contain a sequence corresponding to a region within amino acids 134 and 196 of HSPB8
Target Name	HSPB8
Accession No.	Swiss-Prot:Q9UJY1 Gene ID:26353
Uniprot	Q9UJY1
GeneID	26353;
Concentration	1mg/ml
Formulation	Supplied in 0.1M Tris-buffered saline with 10% Glycerol (pH7.0). 0.01% Thimerosal was added as a preservative.
Storage	Store at -20°C for long term preservation (recommended). Store at 4°C for short term use.

Application Details

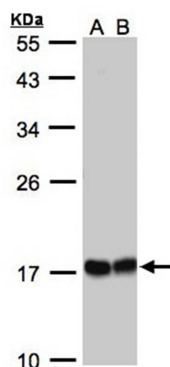
Predicted MW: 22kd

Western blotting: 1:500-1:3000

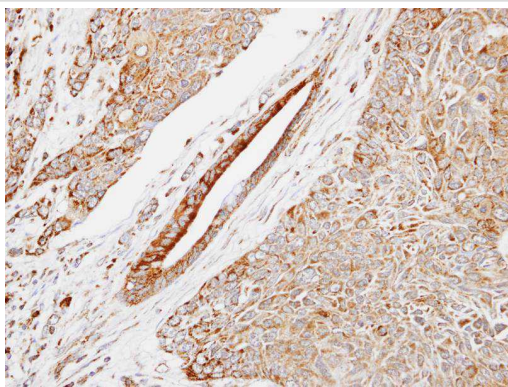
Immunohistochemistry: 1:50-1:500

Immunofluorescence: 1:100-1:200

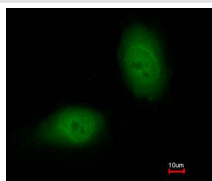
Images



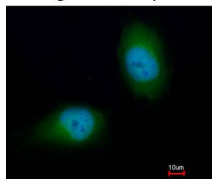
Sample(30 ug whole cell lysate)
 A: 293T whole cell lysate
 B: A431
 12% SDS PAGE
 Primary antibody diluted at 1: 1000



Immunohistochemical analysis of paraffin-embedded LUNG SCC, using HSP22 antibody at 1: 500 dilution.



Merged with DNA probe



Immunofluorescence analysis of paraformaldehyde-fixed HeLa, using HSPB8 antibody at 1: 200 dilution.

Background

The protein encoded by this gene belongs to the superfamily of small heat-shock proteins containing a conservative alpha-crystallin domain at the C-terminal part of the molecule. The expression of this gene is induced by estrogen in estrogen receptor-positive breast cancer cells, and this protein also functions as a chaperone in association with Bag3, a stimulator of macroautophagy. Thus, this gene appears to be involved in regulation of cell proliferation, apoptosis, and carcinogenesis, and mutations in this gene have been associated with different neuromuscular diseases, including Charcot-Marie-Tooth disease. [provided by RefSeq]

Note: This product is for in vitro research use only