

## ALS2CR3 antibody

Catalog No: #22715

Orders: [order@signalwayantibody.com](mailto:order@signalwayantibody.com)Support: [tech@signalwayantibody.com](mailto:tech@signalwayantibody.com)

## Description

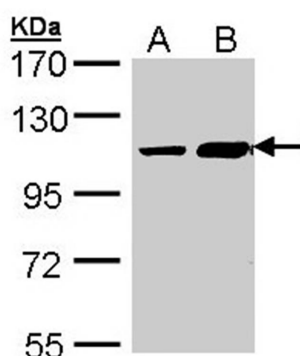
Product Name	ALS2CR3 antibody
Host Species	Rabbit
Clonality	Polyclonal
Purification	Purified by antigen-affinity chromatography.
Applications	WB
Species Reactivity	Hu
Immunogen Type	Peptide
Immunogen Description	Synthetic peptide contain a sequence corresponding to a region within amino acids 852 and 914 of Human TRAK2
Target Name	ALS2CR3
Accession No.	Swiss-Prot:O60296Gene ID:66008
Uniprot	O60296
GeneID	66008;
Concentration	1mg/ml
Formulation	Supplied in 0.1M Tris-buffered saline with 10% Glycerol (pH7.0). 0.01% Thimerosal was added as a preservative.
Storage	Store at -20°C for long term preservation (recommended). Store at 4°C for short term use.

## Application Details

Predicted MW: 101kd

Western blotting: 1:500-1:3000

## Images



Sample (30 ug of whole cell lysate)  
A: Hep G2  
B: Molt-4  
7.5% SDS PAGE  
Primary antibody diluted at 1: 1000

Note: This product is for in vitro research use only