

CD66c/d Polyclonal Antibody

Catalog No: #41959



Package Size: #41959-1 50ul #41959-2 100ul

Orders: order@signalwayantibody.comSupport: tech@signalwayantibody.com

Description

Product Name	CD66c/d Polyclonal Antibody
Host Species	Rabbit
Clonality	Polyclonal
Purification	The antibody was affinity-purified from rabbit antiserum by affinity-chromatography using epitope-specific immunogen.
Applications	WB ELISA
Species Reactivity	Hu
Specificity	CD66c/d Polyclonal Antibody detects endogenous levels of CD66c/d protein.
Immunogen Type	peptide
Immunogen Description	Synthesized peptide derived from the Internal region of human CD66c/d.
Target Name	CD66c/d
Other Names	CEACAM3; CD66D; CGM1; Carcinoembryonic antigen-related cell adhesion molecule 3; Carcinoembryonic antigen CGM1; CD66d; CEACAM6; NCA; Carcinoembryonic antigen-related cell adhesion molecule 6; Non-specific crossreacting antigen; Normal cross-reacting antigen
Accession No.	Swiss-Prot: P40198/P40199NCBI Gene ID: 1084/4680
Uniprot	P40198
GeneID	1084;
SDS-PAGE MW	30kd
Concentration	1mg/ml
Formulation	Liquid in PBS containing 50% glycerol, 0.5% BSA and 0.02% sodium azide.
Storage	Store at -20°C/1 year

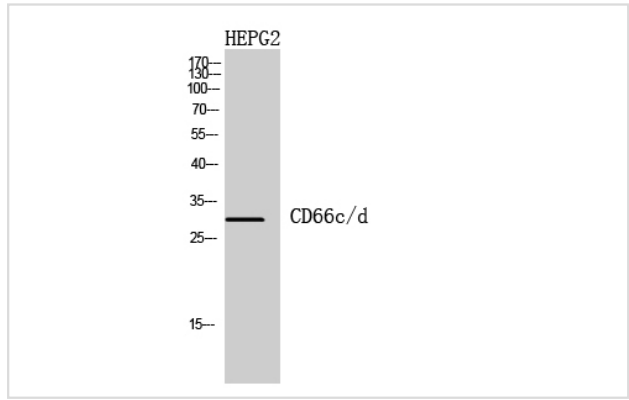
Application Details

Western Blot: 1/500 - 1/2000.

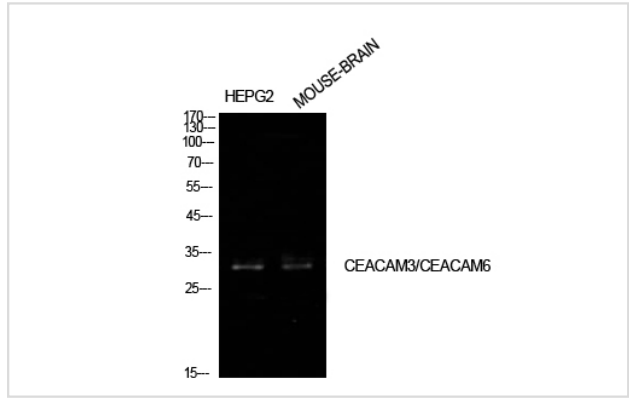
ELISA: 1/10000.

Not yet tested in other applications.

Images



Western Blot analysis of HEPG2 cells using CD66c/d Polyclonal Antibody



Western Blot analysis of HepG2 mouse brain cells using CD66c/d Polyclonal Antibody

Note: This product is for in vitro research use only