

CD93 Polyclonal Antibody

Catalog No: #41962

Package Size: #41962-1 50ul #41962-2 100ul

Orders: order@signalwayantibody.comSupport: tech@signalwayantibody.com

Description

Product Name	CD93 Polyclonal Antibody
Host Species	Rabbit
Clonality	Polyclonal
Purification	The antibody was affinity-purified from rabbit antiserum by affinity-chromatography using epitope-specific immunogen.
Applications	WB ELISA
Species Reactivity	Hu
Specificity	CD93 Polyclonal Antibody detects endogenous levels of CD93 protein.
Immunogen Type	peptide
Immunogen Description	Synthesized peptide derived from the Internal region of human CD93.
Target Name	CD93
Other Names	CD93; C1QR1; MXRA4; Complement component C1q receptor; C1q/MBL/SPA receptor; C1qR; C1qR(p); C1qRp; CDw93; Complement component 1 q subcomponent receptor 1; Matrix-remodeling-associated protein 4; CD93
Accession No.	Swiss-Prot: Q9NPY3NCBI Gene ID: 22918
Uniprot	Q9NPY3
GeneID	22918;
SDS-PAGE MW	72kd
Concentration	1mg/ml
Formulation	Liquid in PBS containing 50% glycerol, 0.5% BSA and 0.02% sodium azide.
Storage	Store at -20°C/1 year

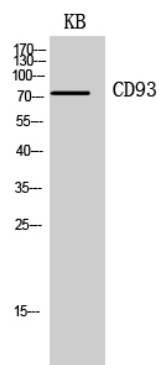
Application Details

Western Blot: 1/500 - 1/2000.

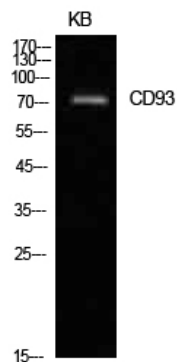
ELISA: 1/10000.

Not yet tested in other applications.

Images



Western Blot analysis of KB cells using CD93 Polyclonal Antibody



Western Blot analysis of KB cells using CD93 Polyclonal Antibody

Note: This product is for in vitro research use only