

## CD235a Polyclonal Antibody

Catalog No: #42002

Package Size: #42002-1 50ul #42002-2 100ul

Orders: [order@signalwayantibody.com](mailto:order@signalwayantibody.com)Support: [tech@signalwayantibody.com](mailto:tech@signalwayantibody.com)

## Description

Product Name	CD235a Polyclonal Antibody
Host Species	Rabbit
Clonality	Polyclonal
Purification	The antibody was affinity-purified from rabbit antiserum by affinity-chromatography using epitope-specific immunogen.
Applications	WB,IHC-p,IF,ELISA
Species Reactivity	Human,Mouse,Rat
Specificity	CD235a Polyclonal Antibody detects endogenous levels of CD235a protein.
Immunogen Description	Synthesized peptide derived from the Internal region of human CD235a.
Target Name	CD235a
Other Names	GYPA; GPA; Glycophorin-A; MN sialoglycoprotein; PAS-2; Sialoglycoprotein alpha; CD235a
Accession No.	Swiss-Prot: P02724NCBI Gene ID: 2993
Uniprot	P02724
GeneID	2993;
SDS-PAGE MW	16kd
Concentration	1mg/ml
Formulation	Liquid in PBS containing 50% glycerol, 0.5% BSA and 0.02% sodium azide.
Storage	Store at -20°C/1 year

## Application Details

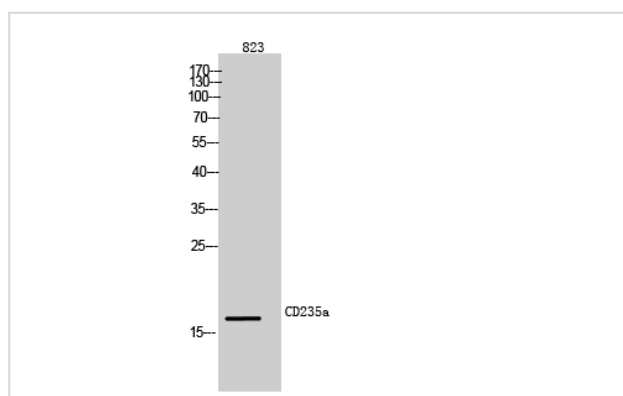
Western Blot: 1/500 - 1/2000.

IHC-p: 1:100-1:300

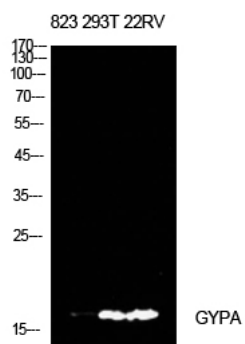
ELISA: 1/10000.

IFoO 1:50-200 Not yet tested in other applications.

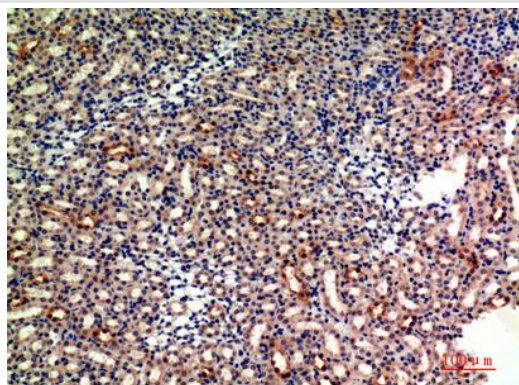
## Images



Western Blot analysis of 823 cells using CD235a Polyclonal Antibody



Western Blot analysis of 823 293T 22RV cells using CD235a Polyclonal Antibody



Immunohistochemical analysis of paraffin-embedded mouse-kidney, antibody was diluted at 1:200

Note: This product is for in vitro research use only