

FH (Phospho-Thr236) Antibody

Catalog No: #11595

Package Size: #11595-1 50ul #11595-2 100ul

Orders: order@signalwayantibody.comSupport: tech@signalwayantibody.com

Description

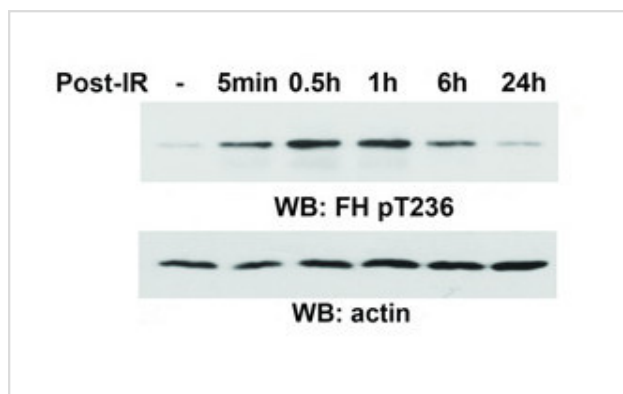
Product Name	FH (Phospho-Thr236) Antibody
Host Species	Rabbit
Clonality	Polyclonal
Purification	Antibodies were produced by immunizing rabbits with synthetic phosphopeptide and KLH conjugates. Antibodies were purified by affinity-chromatography using epitope-specific phosphopeptide. Non-phospho specific antibodies were removed by chromatography using non-phosphopeptide.
Applications	WB
Species Reactivity	Hu Ms Rt
Specificity	The antibody detects endogenous level of FH only when phosphorylated at threonine 236.
Immunogen Type	Peptide-KLH
Immunogen Description	Peptide sequence around phosphorylation site of threonine 236(T-H-T(p)-Q-D) derived from Human FH.
Target Name	FH
Modification	Phospho
Other Names	Fumarase; fumarate hydratase; Fumarate hydratase, mitochondrial; FUMH; HLRCC;B
Accession No.	Swiss-Prot: P07954NCBI Protein: NP_000134.2
Uniprot	P07954
GeneID	2271;
Concentration	1.0mg/ml
Formulation	Supplied at 1.0mg/mL in phosphate buffered saline (without Mg ²⁺ and Ca ²⁺), pH 7.4, 150mM NaCl, 0.02% sodium azide and 50% glycerol.
Storage	Store at -20°C for long term preservation (recommended). Store at 4°C for short term use.

Application Details

Predicted MW: 54kd

Western blotting: 1:500~1:1000

Images



Western blot analysis of extracts from Thymidine double block-synchronized U2OS cells (G1 phase) using FH3 (Phospho-Thr236) Antibody #11595. Reference: Nat Cell Biol. 2015 Sep;17(9):1158-68.

References

Also acts as a tumor suppressor.

Note: This product is for in vitro research use only