

## Ferritin light chain Monoclonal Antibody

Catalog No: #42045

Orders: [order@signalwayantibody.com](mailto:order@signalwayantibody.com)Support: [tech@signalwayantibody.com](mailto:tech@signalwayantibody.com)

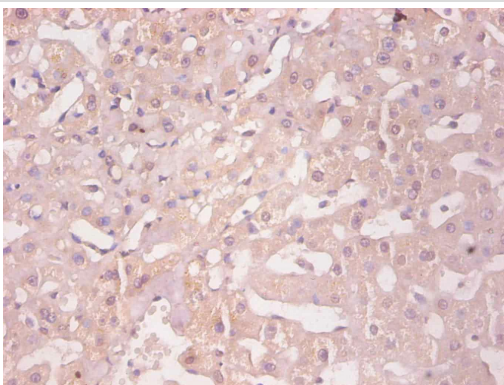
## Description

Product Name	Ferritin light chain Monoclonal Antibody
Host Species	Mouse
Clonality	Monoclonal
Purification	protein G purified
Applications	IHC
Species Reactivity	Hu
Specificity	specific for human Ferritin light chain denatured and native forms
Immunogen Type	protein
Immunogen Description	Recombinant Human Ferritin light chain
Target Name	Ferritin light chain
Other Names	FTL, Ferritin L subunit
Accession No.	Swiss-Prot#: P02792
Uniprot	P02792
GeneID	2512;
Concentration	1.0mg/mL
Formulation	Preservative: 0.03% Proclin 300 Constituents: 50% Glycerol, 0.01M PBS, PH 7.4
Storage	Store at -20°C

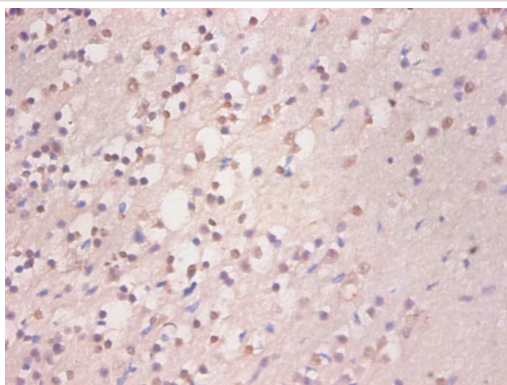
## Application Details

Immunohistochemistry: 1:20 - 1:200

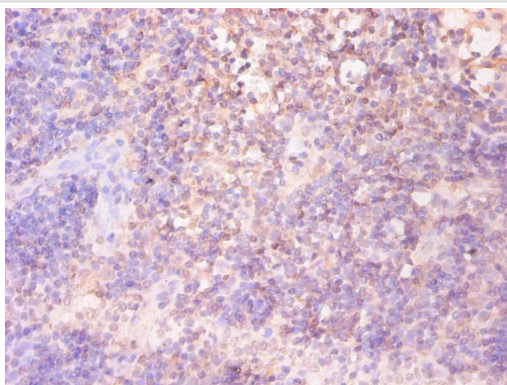
## Images



Immunohistochemical analysis of paraffin-embedded human liver tissue using #42045 at dilution of 1:200.



Immunohistochemical analysis of paraffin-embedded human brain tissue using #42045 at dilution of 1:200.



Immunohistochemical analysis of paraffin-embedded human lymph node tissue using #42045 at dilution of 1:200.

## Background

Stores iron in a soluble, non-toxic, readily available form. Important for iron homeostasis. Iron is taken up in the ferrous form and deposited as ferric hydroxides after oxidation. Also plays a role in delivery of iron to cells. Mediates iron uptake in capsule cells of the developing kidney.

## References

- [1] "Structural and functional relationships of human ferritin H and L chains deduced from cDNA clones." Boyd D., Vecoli C., Belcher D.M., Jain S.K., Drysdale J.W.J. Biol. Chem. 260:11755-11761(1985) [2] "Structure of human ferritin lig

Note: This product is for in vitro research use only