

# Serine/arginine-rich splicing factor 9 Polyclonal Antibody

Catalog No: #42073

Orders: [order@signalwayantibody.com](mailto:order@signalwayantibody.com)Support: [tech@signalwayantibody.com](mailto:tech@signalwayantibody.com)

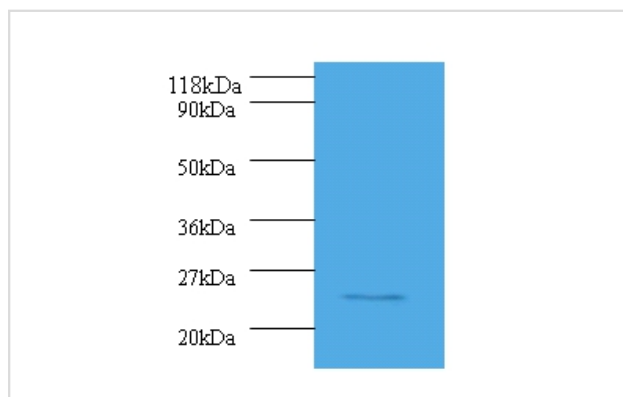
## Description

Product Name	Serine/arginine-rich splicing factor 9 Polyclonal Antibody
Host Species	Rabbit
Clonality	Polyclonal
Purification	Caprylic Acid Ammonium Sulfate Precipitation purified
Applications	WB
Species Reactivity	Hu
Specificity	The antibody detects endogenous level of total Serine/arginine-rich splicing factor 9 polyclonal antibody.
Immunogen Type	protein
Immunogen Description	Recombinant human Serine/arginine-rich splicing factor 9 protein
Target Name	Serine/arginine-rich splicing factor 9
Other Names	SRSF9
Accession No.	Swiss-Prot#: Q13242
Uniprot	Q13242
GeneID	8683;
Calculated MW	26kd
Formulation	Preservative: 0.03% Proclin 300 Constituents: 50% Glycerol, 0.01M PBS, PH 7.4
Storage	Store at -20°C

## Application Details

Western blotting: □ 1:500 - 1:1000

## Images



All lanes: Serine/arginine-rich splicing factor 9 antibody at 2ug/ml+mouse kidney tissue  
 Secondary  
 Goat polyclonal to Rabbit IgG at 1/10000 dilution  
 Predicted band size:26 kDa  
 Observed band size:26 kDa

## Background

Plays a role in constitutive splicing and can modulate the selection of alternative splice sites

## References

---

[1]"Identification and characterization of three members of the human SR family of pre-mRNA splicing factors." Screatton G.R., Caceres J.F., Mayeda A., Bell M.V., Plebanski M., Jackson D.G., Bell J.I., Krainer A.R. EMBO J. 14:4336-4349(1995) [

---

Note: This product is for in vitro research use only