

Protein disulfide-isomerase Polyclonal Antibody

Catalog No: #42079

Orders: order@signalwayantibody.comSupport: tech@signalwayantibody.com

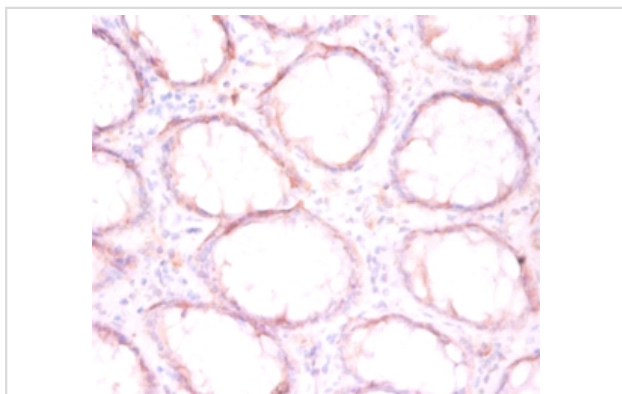
Description

Product Name	Protein disulfide-isomerase Polyclonal Antibody
Host Species	Rabbit
Clonality	Polyclonal
Purification	Caprylic Acid Ammonium Sulfate Precipitation purified
Applications	IHC
Species Reactivity	Hu
Specificity	The antibody detects endogenous level of total Protein disulfide-isomerase polyclonal antibody.
Immunogen Type	protein
Immunogen Description	Recombinant human Protein disulfide-isomerase
Target Name	Protein disulfide-isomerase
Other Names	ERBA2L, PDI, PDIA1, PO4DB, P4HB, Cellular thyroid hormone-binding protein, Prolyl 4-hydroxylase subunit beta, p55
Accession No.	Swiss-Prot#: P07237
Uniprot	P07237
GeneID	5034;
Formulation	Preservative: 0.03% Proclin 300 Constituents: 50% Glycerol, 0.01M PBS, PH 7.4
Storage	Store at -20°C

Application Details

Immunohistochemistry: 1:20 - 1:200

Images



Immunohistochemical analysis of paraffin-embedded human colorectal carcinoma using #42079 at dilution of 1:50.

Background

Dsb proteins (DsbA, DsbB, DsbC, and DsbD) catalyze formation and isomerization of protein disulfide bonds in the periplasm of *Escherichia coli*. Disulphide bond isomerase (DsbC), a member of the thioredoxin superfamily, acts as a disulfide isomerase and converts aberrant disulfide bonds to correct ones. It also acts by transferring its disulfide bond to other proteins and is reduced in the process. DsbC is reoxidized by a yet uncharacterized protein.

References

[1]"Molecular cloning of the beta-subunit of human prolyl 4-hydroxylase. This subunit and protein disulphide isomerase are products of the same gene."Pihlajaniemi T., Helaakoski T., Tasanen K., Myllylae R., Huhtala M.-L., Koivu J., Kivirikko K.I. EMBO J.

Note: This product is for in vitro research use only