

## Carbonic anhydrase 2 Polyclonal Antibody

Catalog No: #42099

Orders: [order@signalwayantibody.com](mailto:order@signalwayantibody.com)Support: [tech@signalwayantibody.com](mailto:tech@signalwayantibody.com)

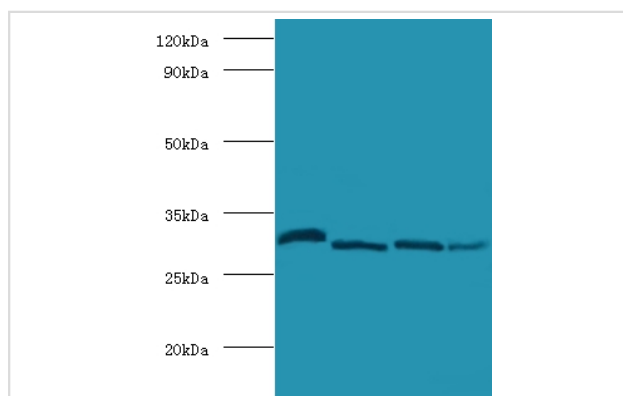
## Description

Product Name	Carbonic anhydrase 2 Polyclonal Antibody
Host Species	Rabbit
Clonality	Polyclonal
Purification	Caprylic Acid Ammonium Sulfate Precipitation purified
Applications	WB
Species Reactivity	Hu
Specificity	The antibody detects endogenous level of total Carbonic anhydrase 2 polyclonal antibody.
Immunogen Type	protein
Immunogen Description	Recombinant human Carbonic anhydrase 2 protein
Target Name	Carbonic anhydrase 2
Other Names	Carbonate dehydratase II, Carbonic anhydrase C, CAC, Carbonic anhydrase II, CA-II, CA2
Accession No.	Swiss-Prot#: P00918
Uniprot	P00918
GeneID	760;
Calculated MW	29kd
Formulation	Preservative: 0.03% Proclin 300 Constituents: 50% Glycerol, 0.01M PBS, PH 7.4
Storage	Store at -20°C

## Application Details

Western blotting: □ 1:500 - 1:1000

## Images



All lanes: Carbonic anhydrase 2 antibody at 2ug/ml

Lane 1: mouse brain tissue

Lane 2: 293T whole cell lysate

Lane 3: mouse heart tissue

Lane 4: mouse liver tissue

Secondary

Goat polyclonal to Rabbit IgG at 1/10000 dilution

Predicted band size:29kDa

Observed band size:29kDa

## Background

Essential for bone resorption and osteoclast differentiation .Reversible hydration of carbon dioxide. Can hydrate cyanamide to urea. Involved in the regulation of fluid secretion into the anterior chamber of the eye. Contributes to intracellular pH regulation in the duodenal upper villous epithelium during proton-coupled peptide absorption. Stimulates the chloride-bicarbonate exchange activity of SLC26A6.

## References

---

[1]"Carbonic anhydrase II deficiency syndrome (osteopetrosis with renal tubular acidosis and brain calcification): novel mutations in CA2 identified by direct sequencing expand the opportunity for genotype-phenotype correlation."Shah G.N., Bon

---

Note: This product is for in vitro research use only