

## Hemoglobin Polyclonal Antibody

Catalog No: #42107

Orders: [order@signalwayantibody.com](mailto:order@signalwayantibody.com)Support: [tech@signalwayantibody.com](mailto:tech@signalwayantibody.com)

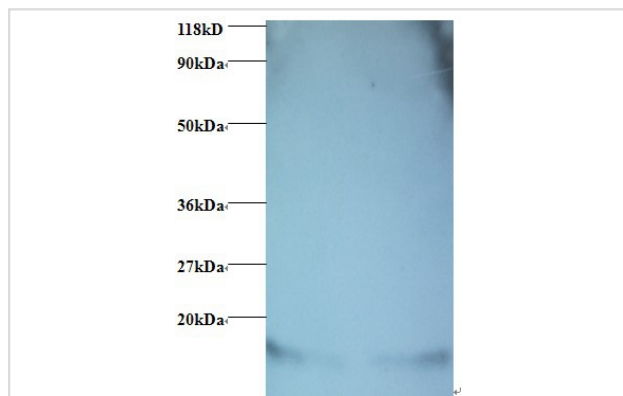
## Description

Product Name	Hemoglobin Polyclonal Antibody
Host Species	Rabbit
Clonality	Polyclonal
Purification	Caprylic Acid Ammonium Sulfate Precipitation purified
Applications	WB
Species Reactivity	Gpig
Specificity	The antibody detects endogenous level of total Hemoglobin polyclonal antibody.
Immunogen Type	protein
Immunogen Description	Guinea Pig Hemoglobin protein
Target Name	Hemoglobin
Calculated MW	16kd
Formulation	Preservative: 0.03% Proclin 300 Constituents: 50% Glycerol, 0.01M PBS, PH 7.4
Storage	Store at -20°C

## Application Details

Western blotting: □ 1:500 - 1:1000

## Images



All lanes : Guinea Pig Hemoglobin antibody at 2ug/ml+Guinea Pig serum  
 Lane 1 : Guinea Pig serum at 1:100  
 Lane 2 : Guinea Pig serum at 1:1000  
 Secondary  
 Goat polyclonal to Rabbit IgG at 1/15000 dilution  
 Predicted band size : 16 kDa      Observed band size: 16kDa

## Background

Involved in oxygen transport from the lung to the various peripheral tissues.

Note: This product is for in vitro research use only