

Hemoglobin Polyclonal Antibody

Catalog No: #42108

Orders: order@signalwayantibody.com

Support: tech@signalwayantibody.com

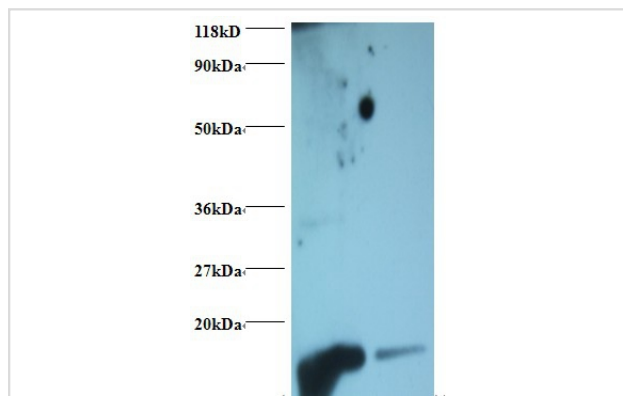
Description

Product Name	Hemoglobin Polyclonal Antibody
Host Species	Rabbit
Clonality	Polyclonal
Purification	Caprylic Acid Ammonium Sulfate Precipitation purified
Applications	WB
Species Reactivity	Ms
Specificity	The antibody detects endogenous level of total Hemoglobin polyclonal antibody.
Immunogen Type	protein
Immunogen Description	Mouse Hemoglobin protein
Target Name	Hemoglobin
Calculated MW	16kd
Formulation	Preservative: 0.03% Proclin 300 Constituents: 50% Glycerol, 0.01M PBS, PH 7.4
Storage	Store at -20°C

Application Details

Western blotting: □ 1:500 - 1:1000

Images



All lanes : Mouse Hemoglobin antibody at 2ug/ml+ Mouse serum
 Lane 1 : Mouse serum at 1:100
 Lane 2 : Mouse serum at 1:1000
 SecondaryGoat polyclonal to Rabbit IgG at 1/15000 dilution

Predicted band size : 16 kDa
 Observed band size: 16kDa

Background

Hemoglobin is involved in oxygen transport from the lung to the various peripheral tissues. The alpha (HBA) and beta (HBB) loci determine the structure of the 2 types of polypeptide chains in adult Hemoglobin. The normal adult Hemoglobin tetramer consists of two alpha chains and two beta chains. Mutant beta globin causes sickle cell anemia. Absence of beta chain causes beta zero thalassemia. Reduced amounts of detectable beta globin causes beta plus thalassemia.

Note: This product is for in vitro research use only