

# Chymotrypsin-like elastase family member 2A Polyclonal Antibody

Catalog No: #42119

Orders: [order@signalwayantibody.com](mailto:order@signalwayantibody.com)Support: [tech@signalwayantibody.com](mailto:tech@signalwayantibody.com)

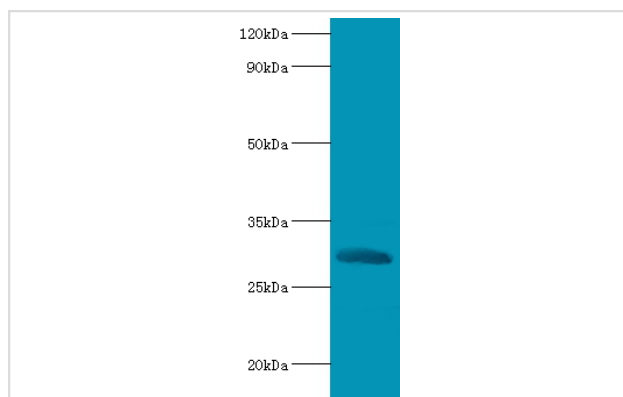
## Description

Product Name	Chymotrypsin-like elastase family member 2A Polyclonal Antibody
Host Species	Rabbit
Clonality	Polyclonal
Purification	Caprylic Acid Ammonium Sulfate Precipitation purified
Applications	WB
Species Reactivity	Ms
Specificity	The antibody detects endogenous level of total Chymotrypsin-like elastase family member 2A polyclonal antibody.
Immunogen Type	protein
Immunogen Description	Recombinant mouse Chymotrypsin-like elastase family member 2A protein
Target Name	Chymotrypsin-like elastase family member 2A
Other Names	Elastase-2 Elastase-2A Cela2a Ela-2, Ela2, Ela2a
Accession No.	Swiss-Prot#: P05208
Uniprot	P05208
GeneID	13706;
Calculated MW	29kd
Formulation	Preservative: 0.03% Proclin 300 Constituents: 50% Glycerol, 0.01M PBS, PH 7.4
Storage	Store at -20°C

## Application Details

Western blotting: □ 1:500 - 1:1000

## Images



All lanes: Chymotrypsin-like elastase family member 2A antibody at 2ug/ml+recombinant Chymotrypsin-like elastase family member 2A protein 0.1ug  
Secondary  
Goat polyclonal to Rabbit IgG at 1/15000 dilution  
Predicted band size:29kda  
Observed band size:29kda

## Background

Acts upon elastin.

## References

---

[1]Sequence organisation and transcriptional regulation of the mouse elastase II and trypsin genes.Stevenson B.J., Hagenbuechle O., Wellauer P.K.Nucleic Acids Res. 14:8307-8330(1986) [2]The status, quality, and expansion of the NIH full-length cDNA p

---

Note: This product is for in vitro research use only