

# C-type lectin domain family 18 member A Polyclonal Antibody

Catalog No: #42125

Orders: [order@signalwayantibody.com](mailto:order@signalwayantibody.com)Support: [tech@signalwayantibody.com](mailto:tech@signalwayantibody.com)

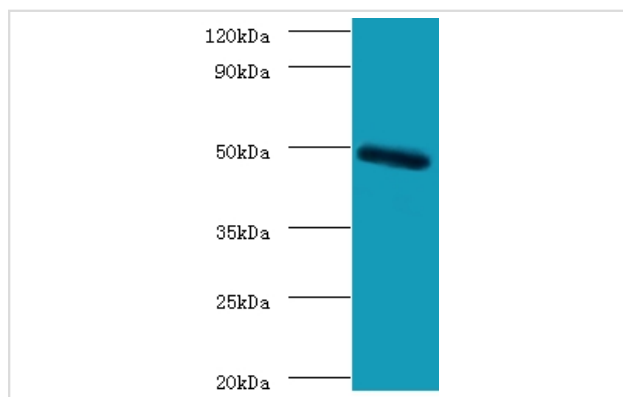
## Description

Product Name	C-type lectin domain family 18 member A Polyclonal Antibody
Host Species	Rabbit
Clonality	Polyclonal
Purification	Caprylic Acid Ammonium Sulfate Precipitation purified
Applications	WB
Species Reactivity	Hu
Specificity	The antibody detects endogenous level of total C-type lectin domain family 18 member A polyclonal antibody.
Immunogen Type	protein
Immunogen Description	Recombinant human C-type lectin domain family 18 member A protein
Target Name	C-type lectin domain family 18 member A
Other Names	Mannose receptor-like protein 2 CLEC18A MRLP2
Accession No.	Swiss-Prot#: A5D8T8
Uniprot	A5D8T8
GeneID	348174;
Calculated MW	50kd
Formulation	Preservative: 0.03% Proclin 300 Constituents: 50% Glycerol, 0.01M PBS, PH 7.4
Storage	Store at -20°C

## Application Details

Western blotting: □ 1:500 - 1:1000

## Images



All lanes: C-type lectin domain family 18 member A antibody  
at 2ug/ml+mouse stomach tissue  
Secondary  
Goat polyclonal to Rabbit IgG at 1/10000 dilution  
Predicted band size:50kDa  
Observed band size:50kDa

## References

[1]Ding P., Han W., Rui M., Wang Y., Zhang Y., Song Q., Ma D.Submitted (JUN-2002)[2]Complete sequencing and characterization of 21,243 full-length human cDNAs.Ota T., Suzuki Y., Nishikawa T., Otsuki T., Sugiyama T., Irie R., Wakamatsu A., Hayashi K., Sa

---

Note: This product is for in vitro research use only