

KIDINS220 antibody

Catalog No: #22736



Orders: [order@signalwayantibody.com](mailto:order@signalwayantibody.com)  
Support: [tech@signalwayantibody.com](mailto:tech@signalwayantibody.com)

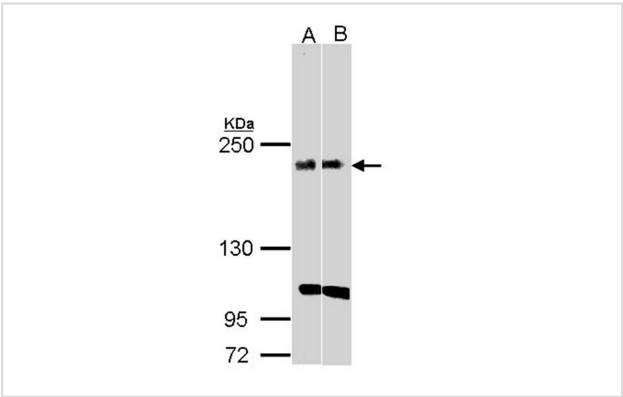
Description

Product Name	KIDINS220 antibody
Host Species	Rabbit
Clonality	Polyclonal
Purification	Purified by antigen-affinity chromatography.
Applications	WB IHC
Species Reactivity	Hu
Immunogen Type	Peptide
Immunogen Description	Synthetic peptide contain a sequence corresponding to a region within amino acids 1706 and 1771 of KIDINS220
Target Name	KIDINS220
Accession No.	Swiss-Prot:Q9ULH0Gene ID:57498
Uniprot	Q9ULH0
GeneID	57498;
Concentration	1mg/ml
Formulation	Supplied in 0.1M Tris-buffered saline with 10% Glycerol (pH7.0). 0.01% Thimerosal was added as a preservative.
Storage	Store at -20°C for long term preservation (recommended). Store at 4°C for short term use.

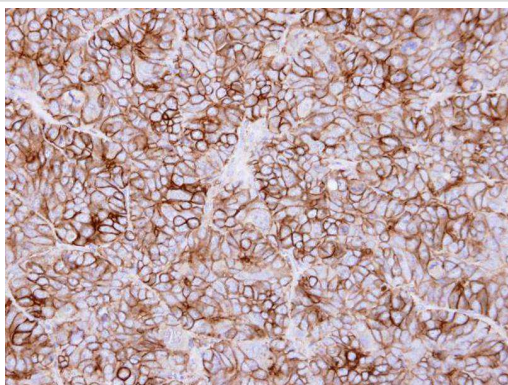
Application Details

Predicted MW: 197kd
Western blotting: 1:500-1:3000
Immunohistochemistry: 1:100-1:500

Images



Sample(30 ug whole cell lysate)  
A: H1299  
B: Raji  
5% SDS PAGE  
Primary antibody diluted at 1: 1000



Immunohistochemical analysis of paraffin-embedded SW480 xenograft, using KIDINS220 antibody at 1: 500 dilution.

---

Note: This product is for in vitro research use only