

Cyclic AMP-responsive element-binding protein 1 Polyclonal Antibody

Catalog No: #42135

Orders: order@signalwayantibody.comSupport: tech@signalwayantibody.com

Description

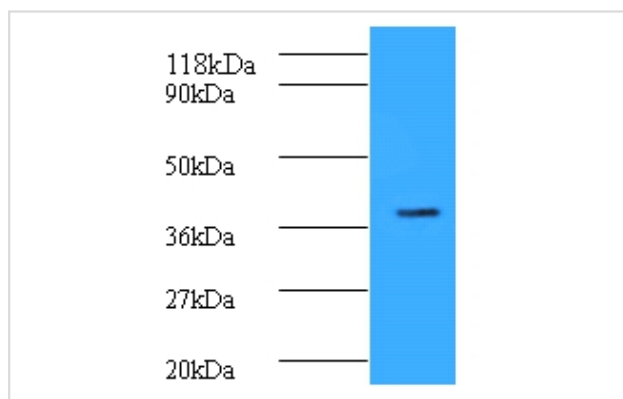
Product Name	Cyclic AMP-responsive element-binding protein 1 Polyclonal Antibody
Host Species	Rabbit
Clonality	Polyclonal
Purification	Caprylic Acid Ammonium Sulfate Precipitation purified
Applications	WB
Species Reactivity	Hu
Specificity	The antibody detects endogenous level of total Cyclic AMP-responsive element-binding protein 1 polyclonal antibody.
Immunogen Type	protein
Immunogen Description	Recombinant human Cyclic AMP-responsive element-binding protein 1 protein
Target Name	Cyclic AMP-responsive element-binding protein 1
Other Names	CREB1
Accession No.	Swiss-Prot#: P16220
Uniprot	P16220
GeneID	1385;
Calculated MW	37kd
Formulation	Preservative: 0.03% Proclin 300 Constituents: 50% Glycerol, 0.01M PBS, PH 7.4
Storage	Store at -20°C

Application Details

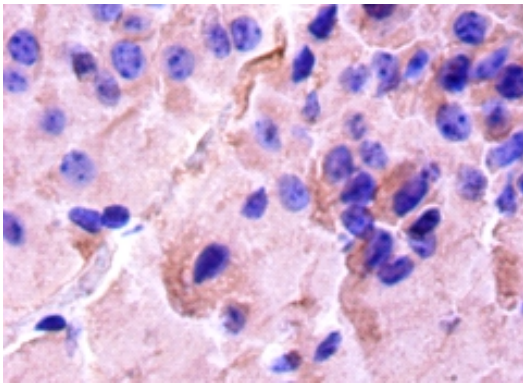
Western blotting: □1:500 - 1:1000

Immunohistochemistry: 1:20 - 1:200

Images



All lanes : Cyclic AMP-responsive element-binding protein 1 antibody at 2ug/ml+mouse brain tissue
 Secondary
 Goat polyclonal to Rabbit IgG at 1/10000 dilution
 Predicted band size : 37 kDa
 Observed band size: 37 kDa



Immunohistochemical analysis of paraffin-embedded mouse brain using #42135 at dilution of 1:50.

Background

Phosphorylation-dependent transcription factor that stimulates transcription upon binding to the DNA cAMP response element (CRE), a sequence present in many viral and cellular promoters. Transcription activation is enhanced by the TORC coactivators which act independently of Ser-133 phosphorylation. Involved in different cellular processes including the synchronization of circadian rhythmicity and the differentiation of adipose cells.

References

- [1] "Two distinct forms of active transcription factor CREB (cAMP response element binding protein)." Berkowitz L.A., Gilman M.Z. Proc. Natl. Acad. Sci. U.S.A. 87:5258-5262(1990) [2] "Multiple cDNA clones encoding nuclear proteins that bind to the tax-dep

Note: This product is for in vitro research use only