

Citrate synthase, mitochondrial Polyclonal Antibody

Catalog No: #42137

Orders: order@signalwayantibody.comSupport: tech@signalwayantibody.com

Description

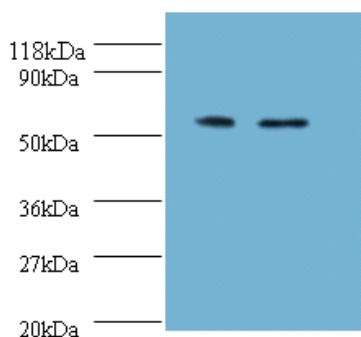
Product Name	Citrate synthase, mitochondrial Polyclonal Antibody
Host Species	Rabbit
Clonality	Polyclonal
Purification	Caprylic Acid Ammonium Sulfate Precipitation purified
Applications	WB IHC
Species Reactivity	Hu
Specificity	The antibody detects endogenous level of total Citrate synthase, mitochondrial polyclonal antibody.
Immunogen Type	protein
Immunogen Description	Recombinant human Citrate synthase, mitochondrial protein
Target Name	Citrate synthase, mitochondrial
Other Names	CS
Accession No.	Swiss-Prot#: O75390
Uniprot	O75390
GeneID	1431;
Calculated MW	52kd
Formulation	Preservative: 0.03% Proclin 300 Constituents: 50% Glycerol, 0.01M PBS, PH 7.4
Storage	Store at -20°C

Application Details

Western blotting: □1:500 - 1:1000

Immunohistochemistry: 1:20 - 1:200

Images



All lanes : Citrate synthase, mitochondrial antibody at 2ug/ml

Lane 1 : Hela whole cell lysate

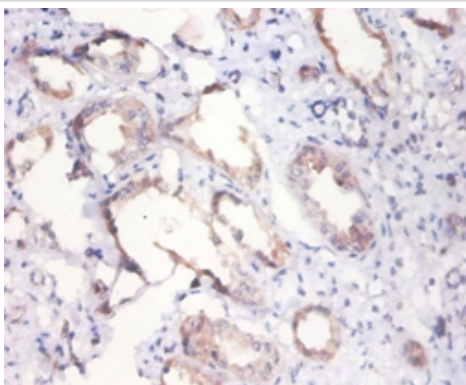
Lane 2 : HepG2 whole cell lysate

Secondary

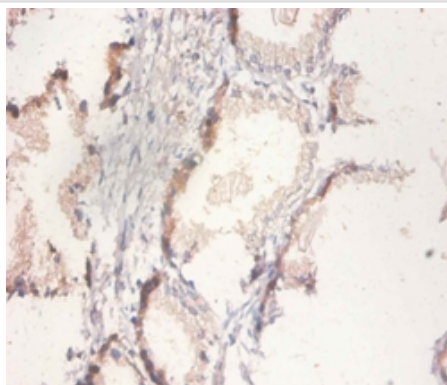
Goat polyclonal to Rabbit IgG at 1/10000 dilution

Predicted band size :52KDa

Observed band size:52KDa



Immunohistochemical analysis of paraffin-embedded human kidney using #42137 at dilution of 1:100.



Immunohistochemical analysis of paraffin-embedded human prostate using #42137 at dilution of 1:100.

Background

Citrate synthase is a pace-maker enzyme in the Krebs cycle.

References

- [1] "Cloning and molecular analysis of the human citrate synthase gene." Goldenthal M.J., Marin-Garcia J., Ananthakrishnan R. *Genome* 41:733-738(1998) [2] "Cloning and tissue expression pattern analysis of the human citrate synthase cDNA." &q

Note: This product is for in vitro research use only