

Cathepsin K Polyclonal Antibody

Catalog No: #42139

Orders: order@signalwayantibody.comSupport: tech@signalwayantibody.com

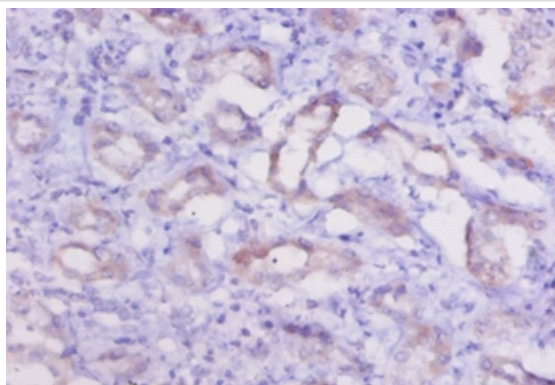
Description

Product Name	Cathepsin K Polyclonal Antibody
Host Species	Rabbit
Clonality	Polyclonal
Purification	Caprylic Acid Ammonium Sulfate Precipitation purified
Applications	IHC
Species Reactivity	Rt
Specificity	The antibody detects endogenous level of total Cathepsin K polyclonal antibody.
Immunogen Type	protein
Immunogen Description	Recombinant Rat Cathepsin K protein
Target Name	Cathepsin K
Other Names	Ctsk
Accession No.	Swiss-Prot#: O35186
Uniprot	O35186
GeneID	29175;
Formulation	Preservative: 0.03% Proclin 300 Constituents: 50% Glycerol, 0.01M PBS, PH 7.4
Storage	Store at -20°C

Application Details

Immunohistochemistry: 1:20 - 1:200

Images



Immunohistochemical analysis of paraffin-embedded human kidney using #42139 at dilution of 1:50.

Background

Closely involved in osteoclastic bone resorption and may participate partially in the disorder of bone remodeling. Displays potent endoprotease activity against fibrinogen at acid pH. May play an important role in extracellular matrix degradation By similarity.

References

[1] Payne J.A., Miller L.R.Submitted (JUN-1997) [2] The status, quality, and expansion of the NIH full-length cDNA project: the Mammalian Gene Collection (MGC).The MGC Project TeamGenome Res. 14:2121-2127(2004)

Note: This product is for in vitro research use only