

## Cytochrome c Polyclonal Antibody

Catalog No: #42140

Orders: [order@signalwayantibody.com](mailto:order@signalwayantibody.com)Support: [tech@signalwayantibody.com](mailto:tech@signalwayantibody.com)

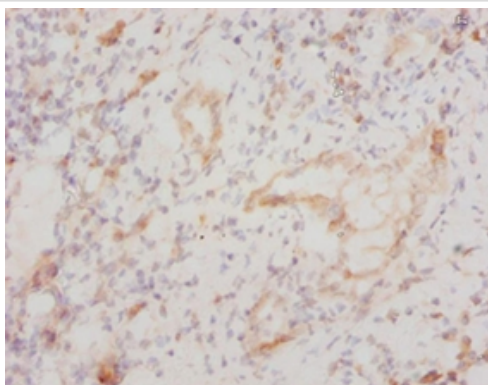
## Description

Product Name	Cytochrome c Polyclonal Antibody
Host Species	Rabbit
Clonality	Polyclonal
Purification	Caprylic Acid Ammonium Sulfate Precipitation purified
Applications	IHC
Species Reactivity	Hu
Specificity	The antibody detects endogenous level of total Cytochrome c polyclonal antibody.
Immunogen Type	protein
Immunogen Description	Recombinant Human Cytochrome c protein
Target Name	Cytochrome c
Other Names	CYCS, CYC
Accession No.	Swiss-Prot#: P99999
Uniprot	P99999
GeneID	54205;
Formulation	Preservative: 0.03% Proclin 300 Constituents: 50% Glycerol, 0.01M PBS, PH 7.4
Storage	Store at -20°C

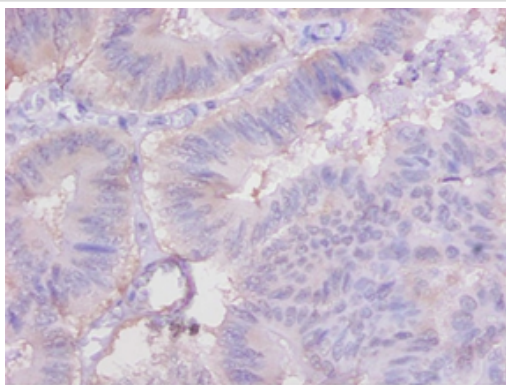
## Application Details

Immunohistochemistry: 1:20 - 1:200

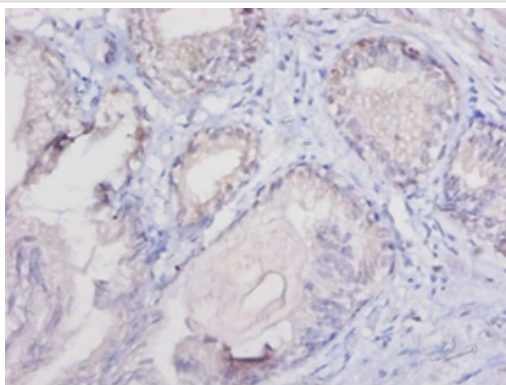
## Images



Immunohistochemical analysis of paraffin-embedded human kidney using #42140 at dilution of 1:100.



Immunohistochemical analysis of paraffin-embedded human colon cancer using #42140 at dilution of 1:100.



Immunohistochemical analysis of paraffin-embedded human prostate sing #42140 at dilution of 1:100.

## Background

Electron carrier protein. The oxidized form of the cytochrome c heme group can accept an electron from the heme group of the cytochrome c1 subunit of cytochrome reductase. Cytochrome c then transfers this electron to the cytochrome oxidase complex, the final protein carrier in the mitochondrial electron-transport chain. Plays a role in apoptosis. Suppression of the anti-apoptotic members or activation of the pro-apoptotic members of the Bcl-2 family leads to altered mitochondrial membrane permeability resulting in release of cytochrome c into the cytosol. Binding of cytochrome c to Apaf-1 triggers the activation of caspase-9, which then accelerates apoptosis by activating other caspases.

## References

- [1] The human somatic cytochrome c gene: two classes of processed pseudogenes demarcate a period of rapid molecular evolution. Evans M.J., Scarpulla R.C. Proc. Natl. Acad. Sci. U.S.A. 85:9625-9629(1988) [2] Cloning of human full-length CDSs in BD Creator(

Note: This product is for in vitro research use only