

## igg heavy chain Polyclonal Antibody

Catalog No: #42160

Orders: [order@signalwayantibody.com](mailto:order@signalwayantibody.com)Support: [tech@signalwayantibody.com](mailto:tech@signalwayantibody.com)

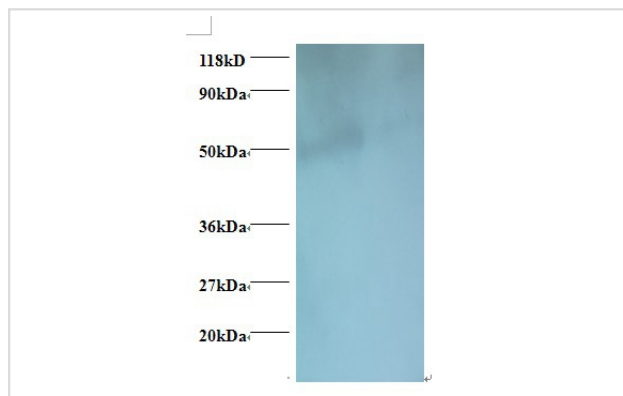
## Description

Product Name	igg heavy chain Polyclonal Antibody
Host Species	Guinea pig
Clonality	Polyclonal
Purification	Caprylic Acid Ammonium Sulfate Precipitation purified
Applications	WB
Species Reactivity	Goat
Specificity	The antibody detects endogenous level of total igg heavy chain polyclonal antibody.
Immunogen Type	protein
Immunogen Description	goat igg heavy chain
Target Name	igg heavy chain
Calculated MW	55kd
Formulation	Preservative: 0.03% Proclin 300 Constituents: 50% Glycerol, 0.01M PBS, PH 7.4
Storage	Store at -20°C

## Application Details

Western blotting: □ 1:500 - 1:1000

## Images



All lanes : goat igg heavy chain antibody at 2ug/ml+goat serum  
 Lane 1 : goat serum at 1 : 100  
 Lane 2 : goat serum at 1 : 1000  
 SecondaryRabbit polyclonal to Guinea pig IgG at 1/15000 dilution  
 Predicted band size : 55 kDa  
 Observed band size: 50kDa

## Background

The basic structure of IgG molecule is composed of four polypeptide chains, that is, from the same two small molecular weight peptides (referred to as light chain, Light chain, L chain, the relative molecular mass of about 25,000) and two identical large molecular weight peptides (called heavy chain, heavy chain, H Chain, relative molecular mass of about 55,000) composed. A natural two heavy chains of IgG molecules are always the same. The goat IgG antibodies can specifically recognize the heavy Chain.

---

Note: This product is for in vitro research use only