

Integrin-linked protein kinase Polyclonal Antibody

Catalog No: #42192

Orders: order@signalwayantibody.comSupport: tech@signalwayantibody.com

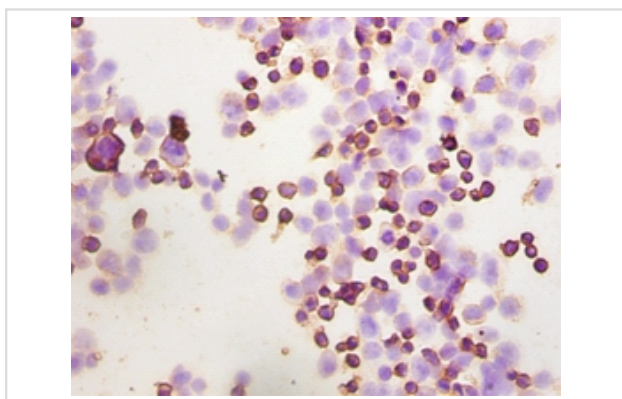
Description

Product Name	Integrin-linked protein kinase Polyclonal Antibody
Host Species	Rabbit
Clonality	Polyclonal
Purification	Caprylic Acid Ammonium Sulfate Precipitation purified
Applications	IHC
Species Reactivity	Hu
Specificity	The antibody detects endogenous level of total Integrin-linked protein kinase polyclonal antibody.
Immunogen Type	protein
Immunogen Description	Recombinant human Integrin-linked protein kinase protein
Target Name	Integrin-linked protein kinase
Other Names	59 kDa serine/threonine-protein kinase, ILK-1, ILK-2, p59ILK
Accession No.	Swiss-Prot#: Q13418
Uniprot	Q13418
GeneID	3611;
Formulation	Preservative: 0.03% Proclin 300 Constituents: 50% Glycerol, 0.01M PBS, PH 7.4
Storage	Store at -20°C

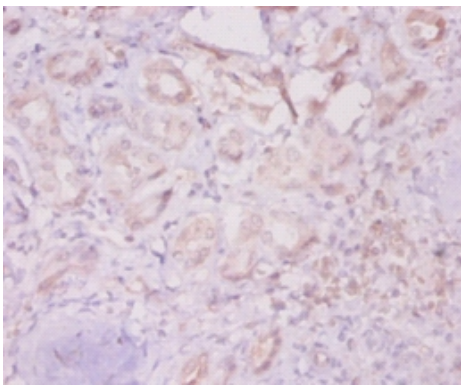
Application Details

Immunohistochemistry: 1:20 - 1:200

Images



Immunohistochemical analysis of paraffin-embedded 293T cells using #42192 at dilution of 1:100.



Immunohistochemical analysis of paraffin-embedded humankidney using #42192 at dilution of 1:20.

Background

Receptor-proximal protein kinase regulating integrin-mediated signal transduction. May act as a mediator of inside-out integrin signaling. Focal adhesion protein part of the complex ILK-PINCH. This complex is considered to be one of the convergence points of integrin- and growth factor-signaling pathway. Could be implicated in mediating cell architecture, adhesion to integrin substrates and anchorage-dependent growth in epithelial cells. Phosphorylates beta-1 and beta-3 integrin subunit on serine and threonine residues, but also AKT1 and GSK3B.

References

[1] "Regulation of cell adhesion and anchorage-dependent growth by a new beta 1-integrin-linked protein kinase."Hannigan G.E., Leung-Hagsteijn C., Fitz-Gibbon L., Coppelino M.G., Radeva G., Filmus J., Bell J.C., Dedhar S.Nature 379:91-96(1996)

Note: This product is for in vitro research use only