

Granzyme B Polyclonal Antibody

Catalog No: #42196

Orders: order@signalwayantibody.comSupport: tech@signalwayantibody.com

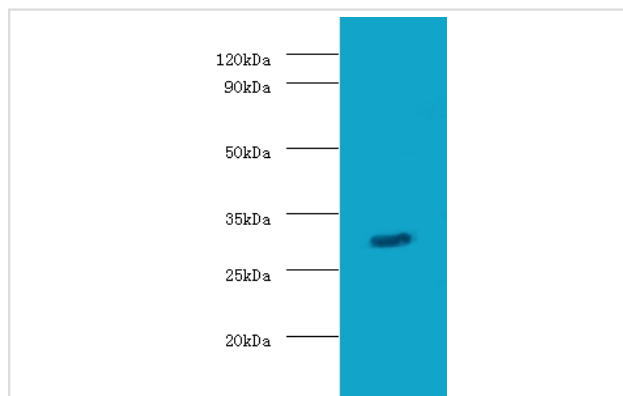
Description

Product Name	Granzyme B Polyclonal Antibody
Host Species	Rabbit
Clonality	Polyclonal
Purification	Caprylic Acid Ammonium Sulfate Precipitation purified
Applications	WB
Species Reactivity	Hu
Specificity	The antibody detects endogenous level of total Granzyme B polyclonal antibody.
Immunogen Type	protein
Immunogen Description	Recombinant human Granzyme B protein
Target Name	Granzyme B
Other Names	C11, CTLA-1, Cathepsin G-like 1, CTSG1, Cytotoxic T-lymphocyte proteinase 2, Lymphocyte protease, Fragmentin-2, Granzyme-2, Human lymphocyte protein, HLP, SECT, T-cell serine protease 1-3E, GZMB, CGL1, CSPB, CTLA1, GRB
Accession No.	Swiss-Prot#: P10144
Uniprot	P10144
GeneID	3002;
Calculated MW	28kd
Formulation	Preservative: 0.03% Proclin 300 Constituents: 50% Glycerol, 0.01M PBS, PH 7.4
Storage	Store at -20°C

Application Details

Western blotting: □1:500 - 1:1000

Images



All lanes: Granzyme B antibody at 2ug/ml+mouse stomach tissue
secondary
Goat polyclonal to rabbit at 1/10000 dilution
predicted band size :28kDa
observed band size :28kDa

Background

This enzyme is necessary for target cell lysis in cell-mediated immune responses. It cleaves after Asp. Seems to be linked to an activation cascade of

caspases (aspartate-specific cysteine proteases) responsible for apoptosis execution. Cleaves caspase-3, -7, -9 and 10 to give rise to active enzymes mediating apoptosis.

References

[1]"Catalog of 680 variations among eight cytochrome p450 (CYP) genes, nine esterase genes, and two other genes in the Japanese population."Saito S., Iida A., Sekine A., Kawauchi S., Higuchi S., Ogawa C., Nakamura Y.J. Hum. Genet. 48:249-270

Note: This product is for in vitro research use only