

Heme oxygenase 1 protein Polyclonal Antibody

Catalog No: #42207

Orders: order@signalwayantibody.comSupport: tech@signalwayantibody.com

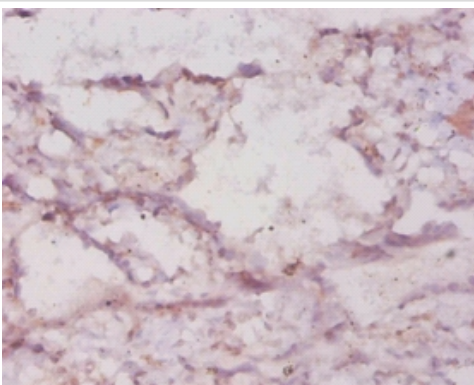
Description

Product Name	Heme oxygenase 1 protein Polyclonal Antibody
Host Species	Rabbit
Clonality	Polyclonal
Purification	Caprylic Acid Ammonium Sulfate Precipitation purified
Applications	IHC
Species Reactivity	Hu
Specificity	The antibody detects endogenous level of total Heme oxygenase 1 protein polyclonal antibody.
Immunogen Type	protein
Immunogen Description	Recombinant human Heme oxygenase 1 protein
Target Name	Heme oxygenase 1 protein
Other Names	HMOX1, HO, HO1
Accession No.	Swiss-Prot#: P09601
Uniprot	P09601
GeneID	3162;
Formulation	Preservative: 0.03% Proclin 300 Constituents: 50% Glycerol, 0.01M PBS, PH 7.4
Storage	Store at -20°C

Application Details

Immunohistochemistry: 1:20 - 1:200

Images



Immunohistochemical analysis of paraffin-embedded human placenta using #42207 at dilution of 1:20.

Background

Heme oxygenase cleaves the heme ring at the alpha methene bridge to form biliverdin. Biliverdin is subsequently converted to bilirubin by biliverdin reductase. Under physiological conditions, the activity of heme oxygenase is highest in the spleen, where senescent erythrocytes are sequestered and destroyed.

References

[1] "Human heme oxygenase cDNA and induction of its mRNA by hemin."Yoshida T., Biro P., Cohen T., Mueller R.M., Shibahara S.Eur. J. Biochem. 171:457-461(1988) [2] "A genome annotation-driven approach to cloning the human ORFeome."

Note: This product is for in vitro research use only