

Galectin-3 Polyclonal Antibody

Catalog No: #42237

Orders: order@signalwayantibody.comSupport: tech@signalwayantibody.com

Description

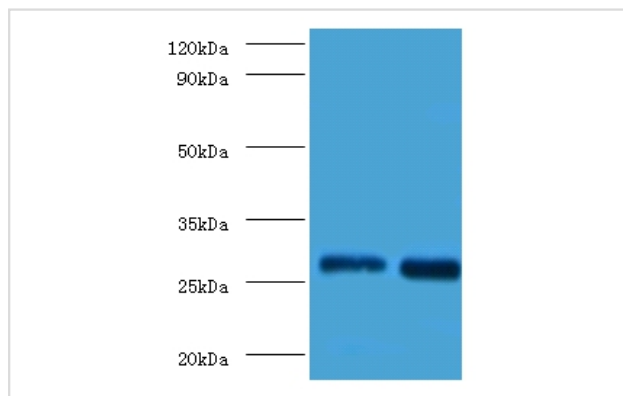
Product Name	Galectin-3 Polyclonal Antibody
Host Species	Rabbit
Clonality	Polyclonal
Purification	Caprylic Acid Ammonium Sulfate Precipitation purified
Applications	WB IHC
Species Reactivity	Hu
Specificity	The antibody detects endogenous level of total Galectin-3 polyclonal antibody.
Immunogen Type	protein
Immunogen Description	Recombinant human Galectin-3 protein
Target Name	Galectin-3
Other Names	35 kDa lectin, Carbohydrate-binding protein 35, Galactose-specific lectin 3, Galactoside-binding protein, IgE-binding protein, L-31, Laminin-binding protein, Lectin L-29, Mac-2 antigen, LGALS3 , MAC2
Accession No.	Swiss-Prot#: P17931
Uniprot	P17931
GeneID	3958;
Calculated MW	26kd
Formulation	Preservative: 0.03% Proclin 300 Constituents: 50% Glycerol, 0.01M PBS, PH 7.4
Storage	Store at -20°C

Application Details

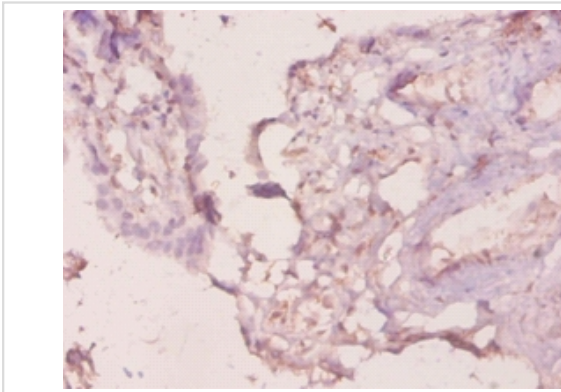
Western blotting: □ 1:500 - 1:1000

Immunohistochemistry: 1:20 - 1:200

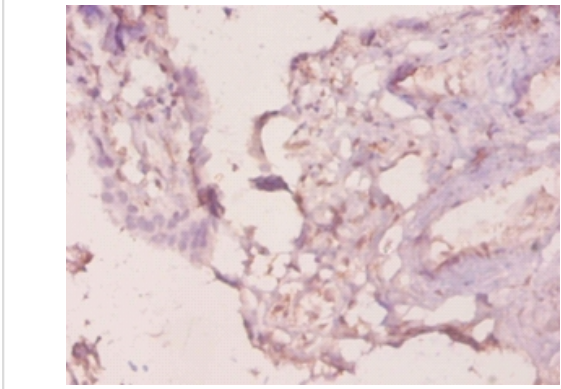
Images



All lanes: Galectin-3 antibody at 2ug/ml
 Lane 1: Hela whole cell lysate
 Lane 2: MCF-7 whole cell lysate
 secondary
 Goat polyclonal to rabbit at 1/10000 dilution
 predicted band size :26kDa
 observed band size :26kDa



Immunohistochemical analysis of paraffin-embedded human kidney using #42237 at dilution of 1:20.



Immunohistochemical analysis of paraffin-embedded human placenta using #42237 at dilution of 1:20.

Background

Galactose-specific lectin which binds IgE. May mediate with the alpha-3, beta-1 integrin the stimulation by CSPG4 of endothelial cells migration. Together with DMBT1, required for terminal differentiation of columnar epithelial cells during early embryogenesis. By similarity. In the nucleus: acts as a pre-mRNA splicing factor. Involved in acute inflammatory responses including neutrophil activation and adhesion, chemoattraction of monocytes, macrophages, opsonization of apoptotic neutrophils, and activation of mast cells.

References

[1] Human IgE-binding protein: a soluble lectin exhibiting a highly conserved interspecies sequence and differential recognition of IgE glycoforms. Robertson M.W., Albrandt K., Keller D., Liu F.-T. *Biochemistry* 29:8093-8100(1990) [2] Molecular cloning of

Note: This product is for in vitro research use only