

# Lipopolysaccharide-responsive and beige-like anchor protein Polyclonal Antibody

Catalog No: #42242

Orders: [order@signalwayantibody.com](mailto:order@signalwayantibody.com)Support: [tech@signalwayantibody.com](mailto:tech@signalwayantibody.com)

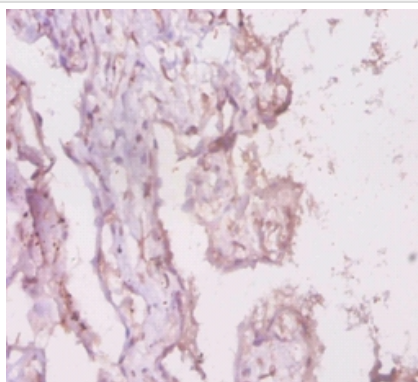
## Description

Product Name	Lipopolysaccharide-responsive and beige-like anchor protein Polyclonal Antibody
Host Species	Rabbit
Clonality	Polyclonal
Purification	Caprylic Acid Ammonium Sulfate Precipitation purified
Applications	IHC
Species Reactivity	Hu
Specificity	The antibody detects endogenous level of total Lipopolysaccharide-responsive and beige-like anchor protein polyclonal antibody.
Immunogen Type	protein
Immunogen Description	Recombinant human Lipopolysaccharide-responsive and beige-like anchor protein
Target Name	Lipopolysaccharide-responsive and beige-like anchor protein
Other Names	Beige-like protein, CDC4-like protein, LRBA, BGL, CDC4L, LBA
Accession No.	Swiss-Prot#: P50851
Uniprot	P50851
GeneID	987;
Formulation	Preservative: 0.03% Proclin 300 Constituents: 50% Glycerol, 0.01M PBS, PH 7.4
Storage	Store at -20°C

## Application Details

Immunohistochemistry: 1:20 - 1:200

## Images



Immunohistochemical analysis of paraffin-embedded human placenta using #42242 at dilution of 1:20.

## Background

May be involved in coupling signal transduction and vesicle trafficking to enable polarized secretion and/or membrane deposition of immune effector molecules

## References

---

[1]"Identification of a novel lipopolysaccharide-inducible gene with key features of both A kinase anchor proteins and chs1/beige proteins."Wang J.-W., Howson J., Haller E., Kerr W.G.J. Immunol. 166:4586-4595(2001) [2] "BCL8 is a novel, evolutionarily

---

Note: This product is for in vitro research use only