

# Proteasome subunit beta type-1 Polyclonal Antibody

Catalog No: #42253

Orders: [order@signalwayantibody.com](mailto:order@signalwayantibody.com)Support: [tech@signalwayantibody.com](mailto:tech@signalwayantibody.com)

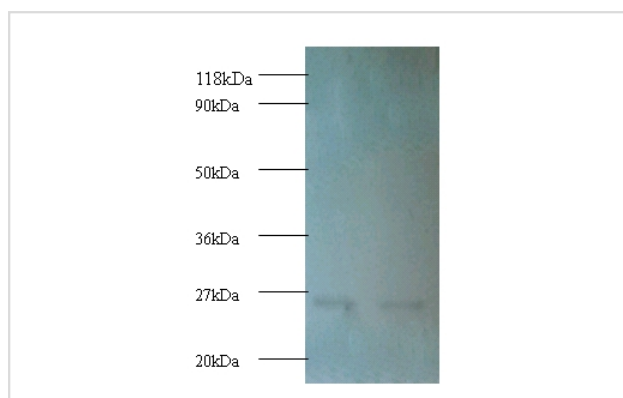
## Description

Product Name	Proteasome subunit beta type-1 Polyclonal Antibody
Host Species	Rabbit
Clonality	Polyclonal
Purification	Caprylic Acid Ammonium Sulfate Precipitation purified
Applications	WB
Species Reactivity	Hu
Specificity	The antibody detects endogenous level of total Proteasome subunit beta type-1 polyclonal antibody.
Immunogen Type	protein
Immunogen Description	Recombinant human Proteasome subunit beta type-1 protein
Target Name	Proteasome subunit beta type-1
Other Names	PSC5, PSMB1, Macropain subunit C5 Multicatalytic endopeptidase complex subunit C5 Proteasome component C5 Proteasome gamma chain
Accession No.	Swiss-Prot#: P20618
Uniprot	P20618
GeneID	5689;
Calculated MW	26.4kd
Formulation	Preservative: 0.03% Proclin 300 Constituents: 50% Glycerol, 0.01M PBS, PH 7.4
Storage	Store at -20°C

## Application Details

Western blotting: □ 1:500 - 1:1000

## Images



All lanes : Proteasome subunit beta 1 antibody at 2ug/ml  
 Lane 1 : EC109 whole cell lysate  
 Lane 2 : 293T whole cell lysate

Secondary: Goat polyclonal to Rabbit IgG at 1/15000 dilution

Predicted band size : 26.4 kDa  
 Observed band size: 26.4 kDa

## Background

The proteasome is a multicatalytic proteinase complex which is characterized by its ability to cleave peptides with Arg, Phe, Tyr, Leu, and Glu adjacent to the leaving group at neutral or slightly basic pH. The proteasome has an ATP-dependent proteolytic activity. Cleavage of peptide bonds with very

broad specificity. The 26S proteasome consists of a 20S proteasome core and two 19S regulatory subunits. The 20S proteasome core is composed of 28 subunits that are arranged in four stacked rings, resulting in a barrel-shaped structure. The two end rings are each formed by seven alpha subunits, and the two central rings are each formed by seven beta subunits. The catalytic chamber with the active sites is on the inside of the barrel. Interacts with SERPINB2. Interacts with HIV-1 TAT protein.

## References

---

[1]"Molecular cloning and sequence analysis of cDNAs for five major subunits of human proteasomes (multi-catalytic proteinase complexes)."Tamura T., Lee D.H., Osaka F., Fujiwara T., Shin S., Chung C.H., Tanaka K., Ichihara A.Biochim. Biophys. Acta 1089:95

---

Note: This product is for in vitro research use only