

Obg-like ATPase 1 Polyclonal Antibody

Catalog No: #42278

Orders: order@signalwayantibody.comSupport: tech@signalwayantibody.com

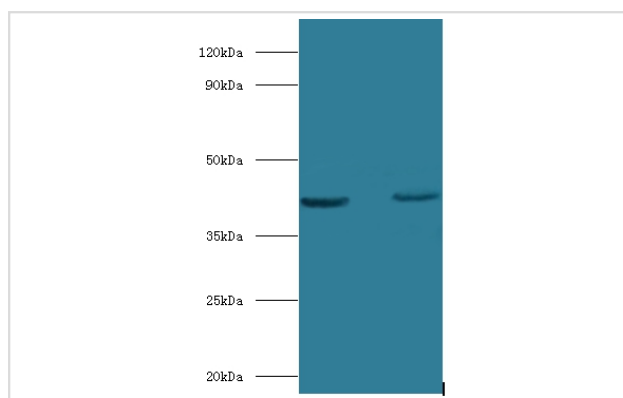
Description

Product Name	Obg-like ATPase 1 Polyclonal Antibody
Host Species	Rabbit
Clonality	Polyclonal
Purification	Caprylic Acid Ammonium Sulfate Precipitation purified
Applications	WB
Species Reactivity	Hu
Specificity	The antibody detects endogenous level of total Obg-like ATPase 1 polyclonal antibody.
Immunogen Type	protein
Immunogen Description	Recombinant human Obg-like ATPase 1 protein
Target Name	Obg-like ATPase 1
Other Names	DNA damage-regulated overexpressed in cancer 45 GTP-binding protein 9 OLA1 GTPBP9 PRO2455, PTD004
Accession No.	Swiss-Prot#: Q9NTK5
Uniprot	Q9NTK5
GeneID	29789;
Calculated MW	45kd
Formulation	Preservative: 0.03% Proclin 300 Constituents: 50% Glycerol, 0.01M PBS, PH 7.4
Storage	Store at -20°C

Application Details

Western blotting: □ 1:500 - 1:1000

Images



All lanes:Obg-like ATPase 1 antibody at 2ug/ml
Lane 1: HepG2 whole cell lysate
Lane 2:mouse stomach tissue
Secondary
Goat polyclonal to Rabbit IgG at 1/10000 dilution
Predicted band size:45kDa
Observed band size:45kDa

Background

Hydrolyzes ATP, and can also hydrolyze GTP with lower efficiency. Has lower affinity for GTP.

References

[1]"DOC45, a novel DNA damage-regulated nucleocytoplasmic ATPase that is overexpressed in multiple human malignancies." Sun H., Luo X., Montalbano J., Jin W., Shi J., Sheikh M.S., Huang Y. Mol. Cancer Res. 8:57-66(2010)

Note: This product is for in vitro research use only