

## Ras-related protein Rab-11A Polyclonal Antibody

Catalog No: #42304

Orders: [order@signalwayantibody.com](mailto:order@signalwayantibody.com)Support: [tech@signalwayantibody.com](mailto:tech@signalwayantibody.com)

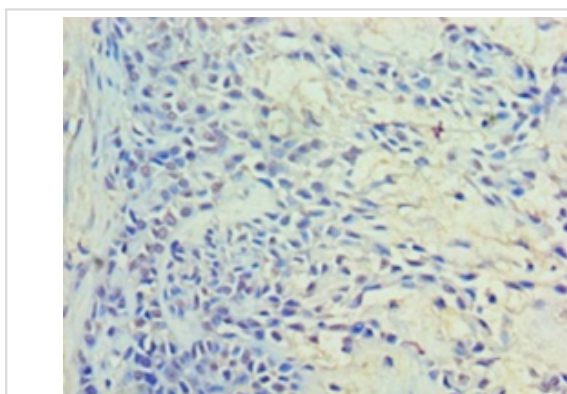
## Description

Product Name	Ras-related protein Rab-11A Polyclonal Antibody
Host Species	Rabbit
Clonality	Polyclonal
Purification	Caprylic Acid Ammonium Sulfate Precipitation purified
Applications	IHC
Species Reactivity	Hu
Specificity	The antibody detects endogenous level of total Ras-related protein Rab-11A polyclonal antibody.
Immunogen Type	protein
Immunogen Description	Recombinant human Ras-related protein Rab-11A proteinB£B"2-213aaB£B©
Target Name	Ras-related protein Rab-11A
Other Names	YL8, RAB11, RAB11A
Accession No.	Swiss-Prot#: P62491
Uniprot	P62491
GeneID	8766;
Formulation	Preservative: 0.03% Proclin 300 Constituents: 50% Glycerol, 0.01M PBS, PH 7.4
Storage	Store at -20°C

## Application Details

Immunohistochemistry: 1:20 - 1:200

## Images



Immunohistochemical analysis of paraffin-embedded human breast cancer using #42304 at dilution of 1:100.

## Background

The small GTPases Rab are key regulators of intracellular membrane trafficking, from the formation of transport vesicles to their fusion with membranes. Rabs cycle between an inactive GDP-bound form and an active GTP-bound form that is able to recruit to membranes different set of downstream effectors directly responsible for vesicle formation, movement, tethering and fusion. That Rab regulates endocytic recycling. Acts as a major regulator of membrane delivery during cytokinesis. Together with MYO5B and RAB8A participates in epithelial cell polarization. Together with RAB3IP, RAB8A, the exocyst complex, PARD3, PRKCI, ANXA2, CDC42 and DNMBP promotes transcytosis of PODXL to the apical membrane

initiation sites (AMIS), apical surface formation and lumenogenesis. Together with MYO5B participates in CFTR trafficking to the plasma membrane and TF (Transferrin) recycling in nonpolarized cells. Required in a complex with MYO5B and RAB11FIP2 for the transport of NPC1L1 to the plasma membrane. Participates in the sorting and basolateral transport of CDH1 from the Golgi apparatus to the plasma membrane. Regulates the recycling of FCGRT (receptor of Fc region of monomeric Ig G) to basolateral membranes. May also play a role in melanosome transport and release from melanocytes.

## References

[1]"Crystal structure of rab11 in complex with rab11 family interacting protein 2." Jagoe W.N., Lindsay A.J., Read R.J., McCoy A.J., McCaffrey M.W., Khan A.R. Structure 14:1273-1283(2006). [2]"Structural basis for Rab11-dependent membrane recruitment of a family of Rab11-interacting protein 3 (FIP3)/Arfophilin-1." Shiba T., Koga H., Shin H.-W., Kawasaki M., Kato R., Nakayama K., Wakatsuki S. Proc. Natl. Acad. Sci. U.S.A. 103:15416-15421(2006). [3]"Structural basis for Rab11-mediated recruitment of FIP3 to recycling endosomes." Eathiraj S., Mishra A., Prekeris R., Lambright D.G. J. Mol. Biol. 364:121-135(2006).

Note: This product is for in vitro research use only