

Lupus La protein Polyclonal Antibody

Catalog No: #42333

Orders: order@signalwayantibody.comSupport: tech@signalwayantibody.com

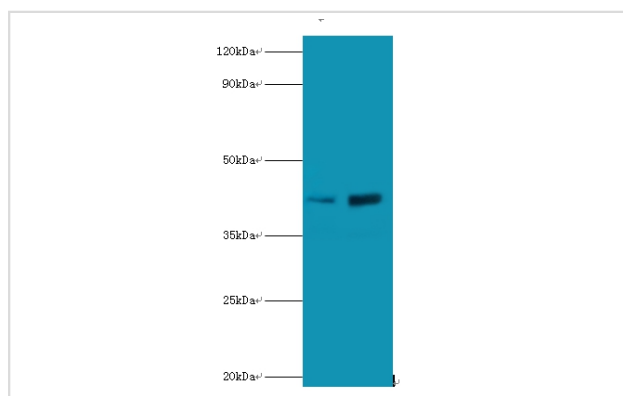
Description

Product Name	Lupus La protein Polyclonal Antibody
Host Species	Rabbit
Clonality	Polyclonal
Purification	Caprylic Acid Ammonium Sulfate Precipitation purified
Applications	WB
Species Reactivity	Hu
Specificity	The antibody detects endogenous level of total Lupus La protein polyclonal antibody.
Immunogen Type	protein
Immunogen Description	Recombinant human Lupus La protein
Target Name	Lupus La protein
Other Names	La autoantigen La ribonucleoprotein Sjogren syndrome type B antigen SSB
Accession No.	Swiss-Prot#: P05455
Uniprot	P05455
GeneID	6741;
Calculated MW	47kd
Formulation	Preservative: 0.03% Proclin 300 Constituents: 50% Glycerol, 0.01M PBS, PH 7.4
Storage	Store at -20°C

Application Details

Western blotting: □ 1:500 - 1:1000

Images



All lanes: Lupus La protein antibody at 2ug/ml
 Lane 1: mouse liver tissue
 Lane 2: mouse brain tissue
 Secondary
 Goat polyclonal to Rabbit IgG at 1/10000 dilution
 Predicted band size: 47kDa
 Observed band size: 47kDa

Background

Binds to the 3' poly(U) terminus of nascent RNA polymerase III transcripts, protecting them from exonuclease digestion and facilitating their folding and maturation.

References

[1]"Ribonucleoprotein SS-B/La belongs to a protein family with consensus sequences for RNA-binding."Chan E.K.L., Sullivan K.F., Tan E.M.Nucleic Acids Res. 17:2233-2244(1989) [2]"Genomic structure and amino acid sequence domains of the h

Note: This product is for in vitro research use only