

## Phospholipase A2 XIA antibody

Catalog No: #22758

Orders: [order@signalwayantibody.com](mailto:order@signalwayantibody.com)Support: [tech@signalwayantibody.com](mailto:tech@signalwayantibody.com)

## Description

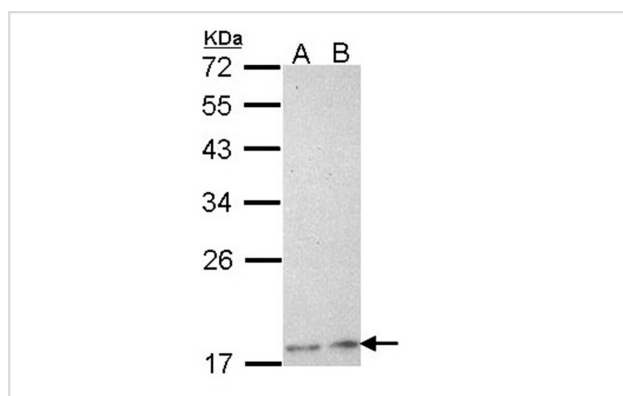
Product Name	Phospholipase A2 XIA antibody
Host Species	Rabbit
Clonality	Polyclonal
Purification	Purified by antigen-affinity chromatography.
Applications	WB
Species Reactivity	Hu
Immunogen Type	Peptide
Immunogen Description	Synthetic peptide contain a sequence corresponding to a region within amino acids 22 and 85 of human PLA2G12A
Target Name	Phospholipase A2 XIA
Accession No.	Swiss-Prot:Q9BZM1 Gene ID:81579
Uniprot	Q9BZM1
GeneID	81579;
Concentration	0.3mg/ml
Formulation	Supplied in 0.1M Tris-buffered saline with 10% Glycerol (pH7.0). 0.01% Thimerosal was added as a preservative.
Storage	Store at -20°C for long term preservation (recommended). Store at 4°C for short term use.

## Application Details

Predicted MW: 21kd

Western blotting: 1:500-1:3000

## Images



Sample (30 ug of whole cell lysate)

A: H1299

B: Hela

12% SDS PAGE

Primary antibody diluted at 1: 1000

## Background

Secreted phospholipase A2 (sPLA2) enzymes liberate arachidonic acid from phospholipids for production of eicosanoids and exert a variety of physiologic and pathologic effects. Group XII sPLA2s, such as PLA2G12A, have relatively low specific activity and are structurally and functionally

distinct from other sPLA2s (Gelb et al., 2000 [PubMed 11031251]).[supplied by OMIM]

---

Note: This product is for in vitro research use only