

40S ribosomal protein S16 Polyclonal Antibody

Catalog No: #42355

Orders: order@signalwayantibody.com

Support: tech@signalwayantibody.com

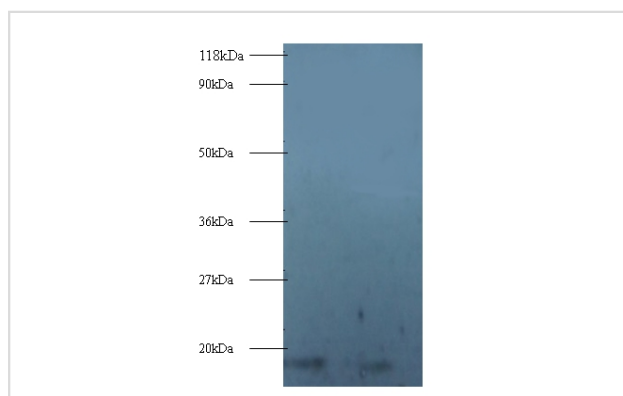
Description

Product Name	40S ribosomal protein S16 Polyclonal Antibody
Host Species	Rabbit
Clonality	Polyclonal
Purification	Caprylic Acid Ammonium Sulfate Precipitation purified
Applications	WB
Species Reactivity	Hu
Specificity	The antibody detects endogenous level of total 40S ribosomal protein S16 polyclonal antibody.
Immunogen Type	protein
Immunogen Description	Recombinant human 40S ribosomal protein S16 protein
Target Name	40S ribosomal protein S16
Other Names	RPS16
Accession No.	Swiss-Prot#: P62249
Uniprot	P62249
GeneID	6217;
Calculated MW	17kd
Formulation	Preservative: 0.03% Proclin 300 Constituents: 50% Glycerol, 0.01M PBS, PH 7.4
Storage	Store at -20°C

Application Details

Western blotting: □ 1:500 - 1:1000

Images



All lanes : RPS16 protein antibody at 2ug/ml
 Lane 1 : 293T whole cell lysate
 Lane 2 : EC109 whole cell lysate

SecondaryGoat polyclonal to Rabbit IgG at 1/15000 dilution

Predicted band size : 17 kDa

Observed band size: 17 kDa

Background

Ribosomes, the organelles that catalyze protein synthesis, consist of a small 40S subunit and a large 60S subunit. Together these subunits are composed of 4 RNA species and approximately 80 structurally distinct proteins. RPS16 is a ribosomal protein that is a component of the 40S subunit. The protein belongs to the S9P family of ribosomal proteins. It is located in the cytoplasm. As is typical for genes encoding ribosomal proteins, there are multiple processed pseudogenes of this gene dispersed through the genome.

References

[1] "Molecular cloning and sequence analysis of the human ribosomal protein S16."Batra S.K., Metzgar R.S., Hollingsworth M.A.J. Biol. Chem. 266:6830-6833(1991) [2] "The human ribosomal protein genes: sequencing and comparative analysis of 73 genes."Yosh

Note: This product is for in vitro research use only