

Cyclin-dependent kinase 11A Polyclonal Antibody

Catalog No: #42427

Orders: order@signalwayantibody.comSupport: tech@signalwayantibody.com

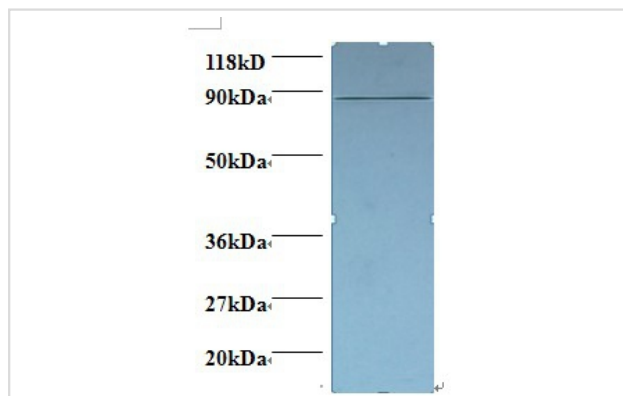
Description

Product Name	Cyclin-dependent kinase 11A Polyclonal Antibody
Host Species	Rabbit
Clonality	Polyclonal
Purification	Caprylic Acid Ammonium Sulfate Precipitation purified
Applications	WB
Species Reactivity	Hu
Specificity	The antibody detects endogenous level of total Cyclin-dependent kinase 11A polyclonal antibody.
Immunogen Type	protein
Immunogen Description	Recombinant human Cyclin-dependent kinase 11A protein
Target Name	Cyclin-dependent kinase 11A
Other Names	CDC2L2, CDC2L3, PITSLREB CDK11A Cell division cycle 2-like protein kinase 2 Cell division protein kinase 11A Galactosyltransferase-associated protein kinase p58/GTA PITSLRE serine/threonine-protein kinase CDC2L2
Accession No.	Swiss-Prot#: Q9UQ88
Uniprot	Q9UQ88
GeneID	728642;
Calculated MW	87kd
Formulation	Preservative: 0.03% Proclin 300 Constituents: 50% Glycerol, 0.01M PBS, PH 7.4
Storage	Store at -20°C

Application Details

Western blotting: □1:500 - 1:1000

Images



Cyclin-dependent kinase 11A antibody at at 2ug/ml+293T whole cell lysate

SecondaryGoat polyclonal to Rabbit IgG at 1/15000 dilution

Predicted band size : 87 kDa

Observed band size: 87kDa

Background

Appears to play multiple roles in cell cycle progression, cytokinesis and apoptosis. The p110 isoforms have been suggested to be involved in

pre-mRNA splicing, potentially by phosphorylating the splicing protein SFRS7. The p58 isoform may act as a negative regulator of normal cell cycle progression.

References

[1] "Molecular cloning and expression of alternatively spliced PITSLRE protein kinase isoforms." Xiang J., Lahti J.M., Grenet J.A., Easton J.B., Kidd V.J. J. Biol. Chem. 269:15786-15794(1994) [PubMed: 8195233] [Abstract] Cited for: NUCLEOTIDE SEQUENCE

Note: This product is for in vitro research use only