

Leptin Polyclonal Antibody

Catalog No: #42465

Orders: order@signalwayantibody.comSupport: tech@signalwayantibody.com

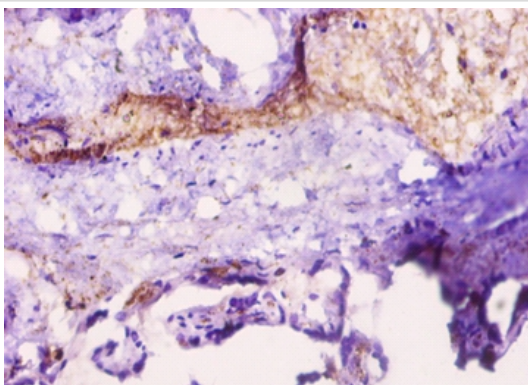
Description

Product Name	Leptin Polyclonal Antibody
Host Species	Rabbit
Clonality	Polyclonal
Purification	Caprylic Acid Ammonium Sulfate Precipitation purified
Applications	IHC
Species Reactivity	Hu
Specificity	The antibody detects endogenous level of total Leptin polyclonal antibody.
Immunogen Type	protein
Immunogen Description	Recombinant human Leptin protein
Target Name	Leptin
Other Names	LEP OB, OBS
Accession No.	Swiss-Prot#: P41159
Uniprot	P41159
GeneID	3952;
Formulation	Preservative: 0.03% Proclin 300 Constituents: 50% Glycerol, 0.01M PBS, PH 7.4
Storage	Store at -20°C

Application Details

Immunohistochemistry: 1:20 - 1:200

Images



Immunohistochemical analysis of paraffin-embedded human placenta using #42465 at dilution of 1:10.

Background

May function as part of a signaling pathway that acts to regulate the size of the body fat depot. An increase in the level of LEP may act directly or indirectly on the CNS to inhibit food intake and/or regulate energy expenditure as part of a homeostatic mechanism to maintain constancy of the adipose mass.

References

[1] Positional cloning of the mouse obese gene and its human homologue. Zhang Y., Proenca P., Maffei M., Barone M., Leopold L., Friedman J.M. Nature 372:425-432(1994) [2] Genomic structure and promoter analysis of the human obese gene. Gong D.W., Bi S., Pra

Note: This product is for in vitro research use only