

## Actin, cytoplasmic 1 Polyclonal Antibody

Catalog No: #42491

Orders: [order@signalwayantibody.com](mailto:order@signalwayantibody.com)Support: [tech@signalwayantibody.com](mailto:tech@signalwayantibody.com)

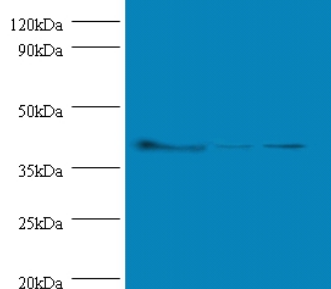
## Description

Product Name	Actin, cytoplasmic 1 Polyclonal Antibody
Host Species	Rabbit
Clonality	Polyclonal
Purification	Caprylic Acid Ammonium Sulfate Precipitation purified
Applications	WB
Species Reactivity	Ms
Specificity	The antibody detects endogenous level of total Actin, cytoplasmic 1 polyclonal antibody.
Immunogen Type	protein
Immunogen Description	Recombinant mouse Actin, cytoplasmic 1 protein
Target Name	Actin, cytoplasmic 1
Other Names	Actb, Beta-actin
Accession No.	Swiss-Prot#: P60710
Uniprot	P60710
GeneID	11461;
Calculated MW	42kd
Formulation	Preservative: 0.03% Proclin 300 Constituents: 50% Glycerol, 0.01M PBS, PH 7.4
Storage	Store at -20°C

## Application Details

Western blotting: □ 1:500 - 1:1000

## Images



All lanes : Actin, cytoplasmic 1 antibody at 2ug/ml

Lane 1: mouse spleen tissue

Lane 2:293T whole cell lysate

Lane 3:Hela whole cell lysate

Secondary

Goat polyclonal to Rabbit IgG at 1/10000 dilution

Predicted band size:42kDa

Observed band size:42kDa

## Background

Actins are highly conserved proteins that are involved in various types of cell motility and are ubiquitously expressed in all eukaryotic cells.

## References

---

[1] "Nucleotide sequence of a full-length cDNA for mouse cytoskeletal beta-actin mRNA."TokunagaK., Taniguchi H., Yoda K., Shimizu M., Sakiyama S.Nucleic Acids Res. 14:2829-2829(1986) [PubMed: 3754329] [Abstract]Cited for: NUCLEOTIDE SEQUENCE [MRNA]. [2

---

Note: This product is for in vitro research use only