

Ferritin light chain Polyclonal Antibody

Catalog No: #42538

Orders: order@signalwayantibody.comSupport: tech@signalwayantibody.com

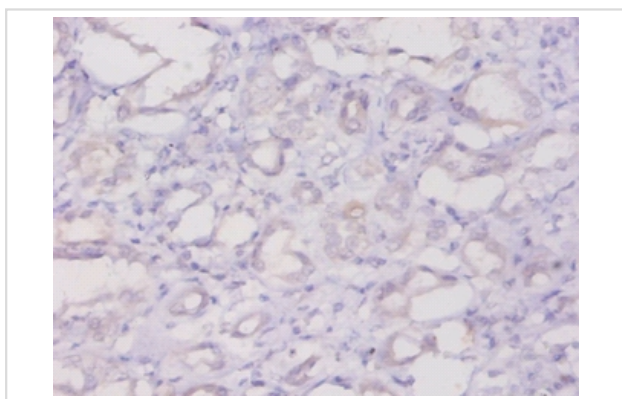
Description

Product Name	Ferritin light chain Polyclonal Antibody
Host Species	Rabbit
Clonality	Polyclonal
Purification	Caprylic Acid Ammonium Sulfate Precipitation purified
Applications	IHC
Species Reactivity	Hu
Specificity	The antibody detects endogenous level of total Ferritin light chain polyclonal antibody.
Immunogen Type	protein
Immunogen Description	Recombinant human Ferritin light chain protein
Target Name	Ferritin light chain
Other Names	FTL, Ferritin L subunit
Accession No.	Swiss-Prot#: P02792
Uniprot	P02792
GeneID	2512;
Formulation	Preservative: 0.03% Proclin 300 Constituents: 50% Glycerol, 0.01M PBS, PH 7.4
Storage	Store at -20°C

Application Details

Immunohistochemistry: 1:20 - 1:200

Images



Immunohistochemical analysis of paraffin-embedded human kidney using #42538 at dilution of 1:20.

Background

Stores iron in a soluble, non-toxic, readily available form. Important for iron homeostasis. Iron is taken up in the ferrous form and deposited as ferric hydroxides after oxidation. Also plays a role in delivery of iron to cells. Mediates iron uptake in capsule cells of the developing kidney.

References

[1] Structural and functional relationships of human ferritin H and L chains deduced from cDNA clones. Boyd D., Vecoli C., Belcher D.M., Jain S.K., Drysdale J.W.J. Biol. Chem. 260:11755-11761(1985) [2] Structure of human ferritin light subunit messenger

Note: This product is for in vitro research use only