

Vinculin Polyclonal Antibody

Catalog No: #42573

Orders: order@signalwayantibody.comSupport: tech@signalwayantibody.com

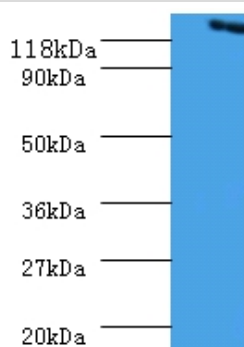
Description

Product Name	Vinculin Polyclonal Antibody
Host Species	Rabbit
Clonality	Polyclonal
Purification	Caprylic Acid Ammonium Sulfate Precipitation purified
Applications	WB
Species Reactivity	Hu
Specificity	The antibody detects endogenous level of total Vinculin polyclonal antibody.
Immunogen Type	protein
Immunogen Description	Recombinant human Vinculin protein
Target Name	Vinculin
Other Names	Metavinculin, VCL,
Accession No.	Swiss-Prot#: P18206
Uniprot	P18206
GeneID	7414;
Calculated MW	125kd
Formulation	Preservative: 0.03% Proclin 300 Constituents: 50% Glycerol, 0.01M PBS, PH 7.4
Storage	Store at -20°C

Application Details

Western blotting: □1:500 - 1:1000

Images



All lanes : Vinculin antibody at 2ug/ml+293T whole cell lysate
 Secondary
 Goat polyclonal to Rabbit IgG at 1/10000 dilution
 Predicted band size :125kDa
 Observed band size:125kDa

Background

Actin filament (F-actin)-binding protein involved in cell-matrix adhesion and cell-cell adhesion. Regulates cell-surface E-cadherin expression and potentiates mechanosensing by the E-cadherin complex. May also play important roles in cell morphology and locomotion.

References

[1] "Complete sequence of human vinculin and assignment of the gene to chromosome 10."Weller P.A., Ogryzko E.P., Corben E.B., Zhidkova N.I., Patel B., Price G.J., Spurr N.K., Koteliansky V.E., Critchley D.R.Proc. Natl. Acad. Sci. U.S.A. 87:566

Note: This product is for in vitro research use only