

IDI1 antibody

Catalog No: #22782



Orders: order@signalwayantibody.com
Support: tech@signalwayantibody.com

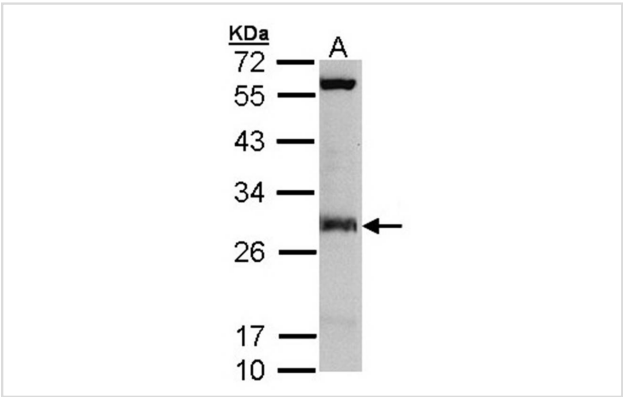
Description

Product Name	IDI1 antibody
Host Species	Rabbit
Clonality	Polyclonal
Purification	Purified by antigen-affinity chromatography.
Applications	WB IHC
Species Reactivity	Hu
Immunogen Type	Recombinant protein
Immunogen Description	Recombinant protein fragment contain a sequence corresponding to a region within amino acids 12 and 200 of Human IDI1
Target Name	IDI1
Accession No.	Swiss-Prot:Q13907Gene ID:3422
Uniprot	Q13907
GeneID	3422;
Concentration	0.7mg/ml
Formulation	Supplied in 0.1M Tris-buffered saline with 10% Glycerol (pH7.0). 0.01% Thimerosal was added as a preservative.
Storage	Store at -20°C for long term preservation (recommended). Store at 4°C for short term use.

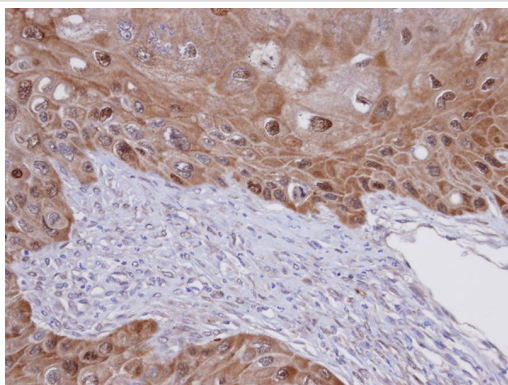
Application Details

Predicted MW: 32kd
Western blotting: 1:500-1:3000
Immunohistochemistry: 1:100-1:250

Images



Sample (30 ug of whole cell lysate)
A: Molt-4
12% SDS PAGE
Primary antibody diluted at 1: 3000



Immunohistochemical analysis of paraffin-embedded SCC15 xenograft, using IDI1 antibody at 1: 100 dilution.

Background

IDI1 encodes a peroxisomally-localized enzyme that catalyzes the interconversion of isopentenyl diphosphate (IPP) to its highly electrophilic isomer, dimethylallyl diphosphate (DMAPP), which are the substrates for the successive reaction that results in the synthesis of farnesyl diphosphate and, ultimately, cholesterol. It has been shown in peroxisomal deficiency diseases such as Zellweger syndrome and neonatal adrenoleukodystrophy that there is reduction in IPP isomerase activity. [provided by RefSeq]

Note: This product is for in vitro research use only