

Membrane-associated tyrosine-and threonine-specific cdc2-inhibitory kinase Polyclonal Antibody

Catalog No: #42601

Orders: order@signalwayantibody.comSupport: tech@signalwayantibody.com

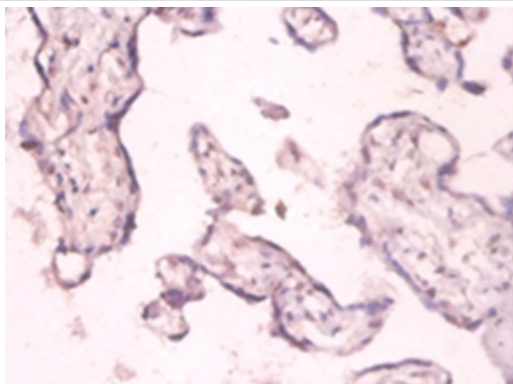
Description

Product Name	Membrane-associated tyrosine-and threonine-specific cdc2-inhibitory kinase Polyclonal Antibody
Host Species	Rabbit
Clonality	Polyclonal
Purification	Caprylic Acid Ammonium Sulfate Precipitation purified
Applications	IHC
Species Reactivity	Hu
Specificity	The antibody detects endogenous level of total Membrane-associated tyrosine-and threonine-specific cdc2-inhibitory kinase polyclonal antibody.
Immunogen Type	protein
Immunogen Description	Recombinant human Membrane-associated tyrosine- and threonine-specific cdc2-inhibitory kinase
Target Name	Membrane-associated tyrosine-and threonine-specific cdc2-inh
Other Names	Myt1 kinase, PKMYT1, MYT1
Accession No.	Swiss-Prot#: Q99640
Uniprot	Q99640
GeneID	9088;
Formulation	Preservative: 0.03% Proclin 300 Constituents: 50% Glycerol, 0.01M PBS, PH 7.4
Storage	Store at -20°C

Application Details

Immunohistochemistry: 1:20 - 1:200

Images



Immunohistochemical analysis of paraffin-embedded human placenta tissue using #42601 at dilution of 1:100.

Background

Acts as a negative regulator of entry into mitosis (G2 to M transition) by phosphorylation of the CDK1 kinase specifically when CDK1 is complexed to cyclins. Mediates phosphorylation of CDK1 predominantly on 'Thr-14'. Also involved in Golgi fragmentation. May be involved in phosphorylation of

CDK1 on 'Tyr-15' to a lesser degree, however tyrosine kinase activity is unclear and may be indirect. May be a downstream target of Notch signaling pathway during eye development.

References

[1] Human Myt1 is a cell cycle-regulated kinase that inhibits Cdc2 but not Cdk2 activity. Booher R.N., Holman P.S., Fattaey A.J. Biol. Chem. 272:22300-22306(1997) [2] The human Myt1 kinase preferentially phosphorylates Cdc2 on threonine 14 and localizes t

Note: This product is for in vitro research use only