

ME1 antibody

Catalog No: #22785

Orders: order@signalwayantibody.comSupport: tech@signalwayantibody.com

Description

Product Name	ME1 antibody
Host Species	Rabbit
Clonality	Polyclonal
Purification	Purified by antigen-affinity chromatography.
Applications	WB IF
Species Reactivity	Hu
Immunogen Type	Recombinant protein
Immunogen Description	Recombinant protein fragment contain a sequence corresponding to a region within amino acids 161 and 489 of ME1
Target Name	ME1
Accession No.	Swiss-Prot:P48163Gene ID:4199
Uniprot	P48163
GeneID	4199;
Concentration	1mg/ml
Formulation	Supplied in 0.1M Tris-buffered saline with 10% Glycerol (pH7.0). 0.01% Thimerosal was added as a preservative.
Storage	Store at -20°C for long term preservation (recommended). Store at 4°C for short term use.

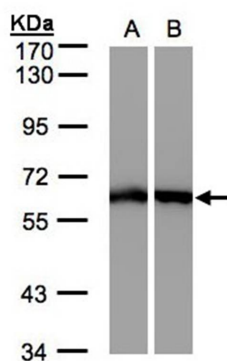
Application Details

Predicted MW: 64kd

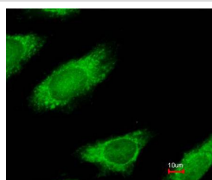
Western blotting: 1:500-1:3000

Immunofluorescence: 1:100-1:200

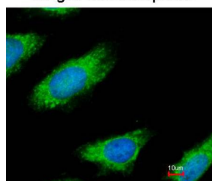
Images



Sample(30 ug whole cell lysate)
A: A431
B: HeLa S3
7.5% SDS PAGE
Primary antibody diluted at 1: 500



Merged with DNA probe



Immunofluorescence analysis of paraformaldehyde-fixed HeLa, using ME1 antibody at 1: 200 dilution.

Background

This gene encodes a cytosolic, NADP-dependent enzyme that generates NADPH for fatty acid biosynthesis. The activity of this enzyme, the reversible oxidative decarboxylation of malate, links the glycolytic and citric acid cycles. The regulation of expression for this gene is complex. Increased expression can result from elevated levels of thyroid hormones or by higher proportions of carbohydrates in the diet. [provided by RefSeq]

Note: This product is for in vitro research use only